
T M 11 - 5 8 2 0 - 7 2 6 - 2 0 P

TECHNICAL MANUAL

**ORGANIZATIONAL MAINTENANCE REPAIR PARTS
AND SPECIAL TOOLS LIST**

RADIO TERMINAL SET AN/TRC-129A

**HEADQUARTERS, DEPARTMENT OF THE ARMY
FEBRUARY 1972**

DEPARTMENT OF THE ARMY TECHNICAL MANUAL

ORGANIZATIONAL MAINTENANCE AND REPAIR PARTS AND
SPECIAL TOOLS LIST
FOR RADIO TERMINAL SET AN/TRC-129A

Headquarters, Department of the Army, Washington, D.C.

22 February 1972

	Paragraph
SECTION I. INTRODUCTION	
Scope	1
General	2
Explanation of columns	3
Special information	4
Location of repair parts	5
Federal supply codes	6
Reporting of equipment manual IMPROVEMENTS	7
II. PRESCRIBED LOAD ALLOWANCE	
III. SPECIAL TOOLS, TEST, AND SUPPORT EQUIPMENT FOR ORGANIZATIONAL MAINTENANCE	

	Paragraph	Page
IV. REPAIR PARTS FOR ORGANIZATIONAL MAINTENANCE		
Antenna Set AN/TRA-36		*
Antenna, Transportable, 762-2281-002		*
Reflector Assembly, 515-4253-036		*
Feed Assembly, 516-4815-001		*
Shelter, Installation, 758-1034-003		*
Box Assembly, Terminal, 516-1034-003		*
Cable Assembly, Main Shelter, 515-6062-001		*
Entry Panel Assembly, Teletypewriter, 515- 6119-001		*
Kit, Stowage, 758-1034-004		*
Kit, Stowage, 774-6462-901		*
Panel Assembly, Voice Entry, 515-6098-001		*
Shelter, Modification, 758-1035-002		*
Battery and Charger, Modified, 758-1061-001		20
Battery - Charger Set, 26191		20
Air Conditioner Assembly, 758-0742-007		*
Box Assembly, Power Distribution, 774-8828-001..		*
Multiplex, MX-106		20
Rack, Super Group, Base Group, 771-6326-001		20
Shelf Assembly, Wired, 518-0371-464		21
Regulator, Power, 12D3-MX		21
Fuse Unit, 11C4-MX		22
Power Metering Unit, 76A2-MX		*

*Not included in the Repair Parts for Organizational Maintenance

	Paragraph	Page
Shelf Assembly, Wired, 518-0371- 344		23
Patch Unit, 27D2-MX		23
Modulator Signal Group, 522-5053-005		23
Amplifier Group, 55W1-MX		24
Amplifier Alarm, 73S1-3MX		24
Monitor Group, 78F3-MX		24
Monitor, Demod, 78F1-2MX		24
Amplifier Alarm, 73S1-1MX		24
Modulator-Demodulator, 758-4747-001		24
Demodulator, S/G, 36D1-MX		24
Patch Unit, Demod, 27E1-MX		24
Shelf Assembly, Wired, 518-0371-334		24
Switch, Base Group, 18G1-MX		25
Regulator, 57A1-7MX		25
Regulator, Switching, 18E1-MX		25
Shelf Assembly, Wired, 518-0371-354		25
Patch Unit, 27B1-MX		26
Modulator, B/G, 33E1-4MX		26
Monitor Alarm, 78D1-4MX		26
Monitor Alarm, 78E1-MX		26
Demodulator, B/G, 34C1-4MX		*
Patch Unit, 27C1-MX		26

✶Not included in the Repair Parts for Organizational Maintenance

	Paragraph	Page
Shelf Assembly, Wired, 518-0371-364		27
Channel Modem, 30P3-1MX		27
Channel Modem, 30P3-2MX		27
Channel Modem, 30P3-3MX		27
Channel Modem, 30P3-4MX		27
Channel Modem, 30P3-5Mx.		27
Channel Modem, 30P3-6MX		27
Channel Modem, 30P3-7MX		27
Channel Modem, 30P3-8MX		27
Channel Modem, 30P3-9MX.		28
Channel Modem, 30P3-10MX		28
Channel Modem, 30P3-11MX		28
Channel Modem, 30P3-12MX		28
Shelf Assembly, Wired, 518-0371-374		28
Signaling Unit, 20H3-MX		28
Shelf Assembly, Wired, 518-0371-384		29
Termination Unit, 19D3-MX		30
Inverter Frequency, Static, J584-20		*
Panel Assembly Connector, 518-0372-204		*
Rack, Base Group, 771-6328-001		30
Voltmeter Unit, Selective, 774-9220-001		30
Voltmeter, Frequency Selective, 3131.		30
Measuring Set, Transmission, H093550A.		31

*Not included in the Repair Parts for Organizational Maintenance

	Paragraph	Page
Shelf Assembly, Wired, 518-0371-354		32
Demodulator B/G, 34C1-3MX		32
Alarm and Monitor, 78D1-3MX		32
Modulator, Redundant, 33E1-3MX		32
Shelf Assembly, Wired, 518-0371-434		32
Panel Assembly, Connector, 518-0372-214		*
Rack, Frequency Generator and Power, 771-6329-001		34
Power Distributor, 518-0371-444		34
Power Regulator, 518-0371-394		34
Shelf Assembly, Wired, 518-0371-324		35
Switch, Baseband, 18F1-MX		36
Filter Modem, 45D1-1MX		36
Signaling Oscillator, 60D1-6MX		36
Signaling Oscillator, 60D1-2MX		36
Oscillator, Pilot, 62P1-NIX		37
Oscillator-Synchronizer, 69X2-1MX		37
Selector, Pulse Pilot, 45E1-MX		37
Pickoff Pilot, 53D5-1MX		37
Shelf Assembly, Wired, 518-0371-415		38
Monitor Alarm, 78H11-NIX		38
Generator, Pulse, 68D3-2MX		38
Selector, Channel, 61A1-1MX		38

*Not included in the Repair Parts for Organizational Maintenance

	Paragraph	Page
Sector, Channel, 61A1-2MX		38
Sector, Channel, 61A1-3MX		38
Selector, Channel, 61A1-4MX		38
Selector, Channel, 61A1-5MX		38
Selector, Channel, 61A1-6MX		38
Shelf Assembly, Wired, 518-0371-425		39
Monitor, Pulse Alarm, 78J1-MX		39
Pulse Alarm, 73T1-MX		39
Generator, Pulse, 68E3-MX		39
Selector, Carrier, 53C1-3MX		39
Selector, Carrier, 63C1-4MX		40
Power Filter, 13A1-MW..		*
Power Supply, 16E4-MW		*
VFTG Rack Equipment, 515-6026-001		40
Panel, Monitor, 515-6009-901		40
Analyzer, Distortion, Modified, 566-7809-003		40
Loop Current Control, TTY, 516-3989-001		41
Panel, Patch, Direct Current, 515-5982-001		*
Shelf FS Tone Converter, 126-0233-002		*
Shelf FS Tone Keyer, 126-0233-001		*
Shelf, Line Battery Power Supply, 126-0233-003		*
Jackfield Assembly, AC		*
Shelf, Line Battery Power Supply, 126-0233-004		*

*Not included in the Repair Parts for Organizational Maintenance

	Paragraph	Page
Shelf, Power, 126-0233-005		*
Amplifier, AF, AM-4560A/TRC		*
Rack Equipment Assembly, 515-6027-002		*
Amplifier - Converter, AM-4916		43
Chassis Assembly, 769-5264-001..		*
Oscillator Assembly, Tuneup, 769-5262-001..		43
Selector Post, 515-6051-001		*
Preamplifier, Radio Frequency, 769-5263-001		*
Transition Assembly, 515-6050-001		*
Preamplifier, Super High Frequency, 665038 .		*
Varactor, Multiplier Assembly, SMD437455 . .		*
Synthesizer, Electrical Frequency, 758-5738-001 .		43
Chassis, Frequency, 774-5876-001		*
Detector, Phase, 774-5875-001		*
Detector, Phase, 800 Kilohertz, 774-5883-001		*
Divider, 40 Megahertz, 770-7755-001		*
Divider, 80 Megahertz, 770-7761-001		*
Divider, 20 Megahertz, 770-7837-001		*
Divider, Reference, 774-6753-001..		*
Filter Modem, 36 Megahertz, 774-5885-001 . .		*
Oscillator, Voltage Control, 774-6824-001		*
Filter Modem, 74 Megahertz, 774-5890-001 . .		*
Oscillator, Voltage Control, 774-6786-001		*

*Not in the Repair Parts for Organizational Maintenance

	Paragraph	Page
Minor Divider, 774-5873-001		*
Minor Divider, 774-7249-001		*
Module Panel Fault, 774-5889-001		44
Module Panel Switch, 774058920001.....		*
Module, Power Supply, 774-6419-001		*
Module, Radio Frequency, 774-6423-001		*
Pane, Patch, Coaxial, 758-1015-001		*
Power Supply, PP-4936/TRC		44
Rack 6, 515-6028-002		44
Amplifier Assembly, AM-4557		44
Monitor, 76A1-TH		44
Regulator, 12A1-TH		45
Converter, 59A1-TH		45
Amplifier, 22A1-TH		*
Amplifier, Subassembly, Limiter, 515-7447-001.		45
Discriminator Subassembly, 515-7444-001.		45
Combiner, 20A1-TH		45
Amplifier, Baseband, 24A1-TH		45
Coupler, Baseband, 40A1-TH		45
Panel, Speaker, 758-0664-001		45
Rack Assembly, Equipment, 515-6029-003		46
Amplifier - Modulator, MD-683/ TRC		46

*Not included in the Repair Parts for Organizational Maintenance

	Paragraph	Page
Monitor Assembly, 76A2-TH		46
Emphasis Unit, 40B1-TH		46
Oscillator, 62A1-TH		46
Control, Automat-k Frequency, 59B1-TH		46
Amplifier, Output, S1A1-TH		46
Card Cage Assembly, Modulator, 515-6580-001..		*
Monitor, AF-RF, MX-7285/TRC		47
Amp1 - Converter, AW4917/TRC.....		*
Chassis Assembly, 769-5257-001..		47
Filter, Side Band, 565-7664-104		*
Demultiplexer - Multiplexer, SMD436534		48
Blower Assembly, HD-739/TRC		*
Rack Equipment Assembly, 515-6030-002		49
Amplifier Power, 50V1-1TH		49
Panel Assembly Control, 515-6310-001		49
Klystron Assembly, 515-6311-002		*
Power Supply, 515-6312-001		*

V. INDEX FEDERAL STOCK NUMBER CROSS REFERENCE
TO INDEX NUMBER

*Not included in the Repair Parts for Organizational Maintenance

Section I

INTRODUCTION

1. Scope

This appendix contains a list of repair parts and special tools required for the performance of organizational maintenance for Radio Terminal Set AN/TRC-129A.

2. General

This repair parts and special tools list is divided into four sections.

a. Prescribed Load Allowance List (PLA), Section II. The PLA is a consolidated listing of repair parts allocated for initial stockage at organizational maintenance level. This is a mandatory minimum stockage allowance.

b. Special Tools, Test Equipment, and Support Equipment for Organizational Maintenance, Section III. Special tools, test equipment, and support equipment authorized for organizational maintenance are included in this section.

c. Repair Parts for Organizational Maintenance, Section IV Repair parts authorized for organizational maintenance are included in this section.

d. Index Federal Stock Number Cross Reference to Index Number, Section V. This is a cross reference of Federal stock numbers to index numbers.

3. Explanation of Columns

An explanation of the columns in sections II through IV is given below.

a. Source, Maintenance, and Recoverability Codes, Column 1, Sections III and IV.

(1) Source code, column 1. The selection status and source for the listed item is noted here. Source codes and their explanations are as follows:

<u>Code</u>	<u>Explanation</u>
P	- Applies to repair parts that are stocked in or supplied from the GSA/DSA or Army supply system and authorized for use at indicated maintenance categories.
A	- Applies to assemblies that are not procured or stocked as such, but are made up of two or more units with each unit carrying assembly or unit individual stock numbers and descriptions, and are procured and stocked, and can be assembled by units at indicated maintenance categories.
O	- Organizational Maintenance

(2) Recoverability code, column 1. The information in this column indicates whether unserviceable items should be returned for recovery or salvage. Recoverability codes and their explanations are as follows:

Note: When no code is indicated in the recoverability column, the part is considered expendable.

<u>Code</u>	<u>Explanation</u>
R	- Applies to repair parts and assemblies that are economically repairable at DSU and GSU activities and normally are furnished by supply on an exchange basis.

Code**Explanation**

F — Applies to high dollar value recoverable repair parts which are subject to special handling and are issued on an exchange basis. Such repair parts normally are repaired or overhauled at depot maintenance activities.

b. Index Number, Column 1, Sections III and IV. The applicable sequence number appears in this column.

The line item index numbers appear in the SMR code column directly under the code letters for each item. The index number for an item is the same for that item in all repair parts lists for this equipment. Index numbers appear in ascending sequence, but the sequence may not be continuous for all items, being removed from the systems or allocated only to a higher category of maintenance.

c. Federal Stock Number, Column 1, Section II, Column 2, Sections III and IV. The Federal stock number for the item is indicated in this column.

d. Description, Column 2, Section II, Column 3, Sections III and IV. The Federal item name, a 5-digit manufacturers code, and a part number are included in this column. For subsequent appearances of the same item, the manufacturers code and part number are omitted. The words SAME AS, followed by the sequence number as it first appeared in the list, follow the item name.

e. Unit of Issue, Column 4, Sections III and IV. The unit used as a basis of issue, that is ea, pr, ft, yd, etc, is indicated in this column.

f. Quantity Incorporated in Unit, Column 5, Sections III and IV. The quantity of repair parts in an assembly is given in this column. Subsequent appearances of the

same item in the same assembly are indicated by the letters REF.

g. Maintenance Allowances, Column 3, Section II, Column 6, Sections III and IV.

- (1) The allowance columns are divided into subcolumns. Indicated in each subcolumn, opposite the first appearance of each item, is the total quantity of items authorized for the number of equipments supported. Subsequent appearances of the same item have no entry in the allowance columns but have a reference in the description column to the first appearance of the item. Items authorized for use as required, but not for initial stockage are identified with an asterisk (*) in the allowance column.
- (2) The quantitative allowances for organizational levels of maintenance represent one initial prescribed load for a 15-day period for the number of equipments supported. Units and organizations authorized additional prescribed loads will multiply the number of prescribed loads authorized, by the quantity of repair parts reflected in the appropriate density column to obtain the total quantity of repair parts authorized.
- (3) Subsequent changes or organizational allowances are limited as follows: No change in the range of items is authorized. If additional items are considered necessary, recommendation should be forwarded to the contracting officer for exception or revision to the allowance list. Revisions to the range of items authorized are made based on engineering experience, demand data, or TAERS information.

b. Illustration Column u, Sections III and IV.

(1) Figure number, column 7a. The number of the illustration in which the item is shown and the maintenance level suffix number of the technical manual in which the illustration appears is indicated in this column. For example, if the illustration in which the item is shown is figure 13 of the operator manual (-10), the manual suffix -10 appears on the first line and the illustration number 13 on the second line. Refer only to those illustrations contained in the narrative and parts lists manuals on the same item of equipment as covered by this manual; that is, manuals with the same serial and FSC number.

(2) Item or reference designation, column 7b. The callout number that references the item in the illustration appears in this column.

4. Special Information

The following publications pertain to Radio Terminal Set AN/TRC-129A.

TM11-5805-351-35

TM11-5805-411-12

TM11-5805-411-35

TM11-5820-726-12

TM11-5820-726-35

5. Location of Repair Parts

When the Federal stock number (FSN) is known, locate the FSN in the Index Federal Stock Number Cross Reference to Index Number; note the index number, and then

locate the item in the repair parts list by index number.

6. Federal Supply Codes

This paragraph lists the Federal supply code and the associated manufacturers name.

<u>Code</u>	<u>Name and Address</u>
02735	RCA Corp. Solid State Div. Route 202 Somerville, NJ 08876
08805	General Electric Co. Large Lamp Dept. Nela Park Cleveland, OH 44112
08806	General Electric Co. Miniature Lamp Dept. Nela Park Cleveland, OH 44112
13499	Collins Radio Co. 5225 Ave. C NE Cedar Rapids, IA 52406
13850	Technipower, Inc. 18 Marshall St. South Norwalk, CT 06854
18410	Rycom Instruments Railway Communications, Inc. 9351 E 59th St. Raytown, MO 664133
24455	General Electric Co. Lamp Div. of Consumer Products Group Nela Park Cleveland, OH 44112
28480	Hewlett - Packard Co. 1501 Page Mill Rd. Palo Alto, CA 94304

<u>Code</u>	<u>Name and Address</u>
33173	General Electric Co. Tube Dept. 316 E Ninth St. Owensboro, KY 42301
49671	RCA Corp. 30 Rockefeller Plaza New York, NY 10020
49956	Raytheon Co. Lexington, MA 02173
55933	Sonotone Corp. Sawmill River Rd. Elmsford, NY 10523
71400	McGraw and Edison Co. Bussman Mfg. Div. 2536 W University St. St. Louis, MO 63017
72619	Dialight Corp. 60 Steward Ave. Brooklyn, NY 11237
72765	Drake Mfg. Co. 4626 N Olcott Ave. Harwood Heights, IL 60656
75376	Kurz & Kasch, Inc. 1421 S Broadway Dayton, OH 45401
75915	Littelfuse, Inc. 800 E Northwest Hwy. Des Plaines, IL 60016
76033	Luminator Inc. 22 N Wacker Dr. Chicago, IL 60606
76655	Porter H K Co. , Inc. Electrical Div. Ambridge Works 14th and Duss St. Ambridge, PA 15003

<u>Code</u>	<u>Name and Address</u>
80058	Joint Electronic Type Designation System
80063	Army Electronics Command Procurement and Production Directorate Ft. Monmouth, NJ 07703
81349	Military Standards
32090	General Television and Radio Corp. Chicago, IL
82219	Sylvania Electric Products, Inc. Electronic Tube Div, Receiving Tube Operations Emporium, PA 15834
93108	Duralith Corp. 1025 Race Philadelphia, PA 19107
96238	Stelma, Inc. 17 Amelia Place Stamford, CT 06902
96906	Military Standards
99313	Varian 611 Hansen Way Palo Alto, CA 94303

7. Reporting of Equipment Manual Improvements

The direct reporting of errors and omissions, and recommendations for improving this equipment manual by the individual user is authorized and encouraged. DA Form 2028 will be used for reporting these improvements. This form may be completed using pencil, pen, or typewriter- DA Forms 2028 will be completed by the individual using the manual and forwarded direct to Commanding General, U. S. Army Electronics Command, ATTN: AMSEL-MR- NMP-AC, Ft. Monmouth, New Jersey 07703.

SECTION II

PRESCRIBED LOAD ALLOWANCE

(1) FEDERAL STATE NUMBER	(2) DESCRIPTION	USABLE ON CODE	(3) IS-DEF ORG MAINTENANCE ALLOWANCE			
			(a) 1-5	(b) 6-20	(c) 21-50	(d) 51-100
	AMPLIFIER, STRAIGHT-RECT 522-7349-001, 13499		2	2	3	5
77602079000	ELECTRON TUBE 6X4GE, 61173		*	2	2	3
77602079000	ELECTRON TUBE 6A2, 61149		*	*	2	2
77602079000	ELECTRON TUBE 6W2, 61149		*	*	2	2
77602079000	FUSE, CARTRIDGE F02A250V1-4A5, 61149		1	4	10	20
	FUSE, CARTRIDGE F02A250V1-4A5, 61149		2	2	3	5
	FUSE, CARTRIDGE F02A250V1-4A5, 61149		*	*	*	2
	FUSE, CARTRIDGE WTEF50-4, 71400		1	2	3	5
	FUSEHOLDER 157601, 75913		1	2	3	5
	KNOB, BAR 3638-1188519-595, 75176		*	*	*	2
	KNOB, CONTROL 1700		*	*	1	2
	OSCILLATOR, PILOT, 6271-MX 522-6478-013, 13499		*	*	2	2
	SWITCH AND DISCRIMINATOR 515-7406-000, 13499		2	2	4	7
	TUBE 776-2452-001, 13499		*	*	*	2
53554801357	KNOB, CONTROL MS91528-172B, 926906		*	*	*	2
5355728.323	KNOB, LOCK, MOLDED 514-1687-001, 13499		*	*	2	2
58051413931	MONITOR, ALARM, J KC, 78L-2X 522-6507-003, 13499		*	*	2	2
58052759119	AMPLIFIER, GROUP, 55W1-MX 522-6465-003, 13499		*	2	3	5
58057687437	EMPHASIS ASSEMBLY 522-5888-004, 13499		*	*	2	2
58059372729	MODULATOR, DEMOD, 3G1-MX 753-4747-001, 13499		*	*	2	2
58150512826	AMPLIFIER, ALARM UNIT 73S1-2MX 522-6620-003, 13499		*	*	2	2
58150512827	AMPLIFIER, ALARM UNIT 73F1-1MX 522-6619-003, 13499		*	*	2	2
58201413924	MONITOR, B/G MODIFIED 78D1-4MX 522-6365-004, 13499		*	*	2	2
58201413926	MONITOR, DEMOD, 78F1-2MX 522-6497-004, 13499		*	*	2	2
58201413927	MONITOR, GROUP, 78F3-MX 522-6815-003, 13499		*	*	*	2
58201413933	SELECTOR, B/G, LOC1-MX 522-6480-004, 13499		*	*	2	2
58201413934	SELECTOR, B/C, 63F1-4MX 522-6481-004, 13499		*	*	2	2
58201413936	SELECTOR, CHANNEL, 61A1-1MX 522-6470-004, 13499		*	*	2	2

SECTION II

PRESCRIBED LOAD ALLOWANCE (CONTINUED)

(1) FEDERAL STOCK NUMBER	(2) DESCRIPTION	USABLE ON CODE	(3) 1-DAY ORG. MAINTENANCE ALLOWANCE			
			(A) 1-5	(B) 6-30	(C) 31-90	(D) 91-300
58201413927	SELECTOR, CHANNEL, 61A1-2MX 522-6472-004, 13499		*	*	2	2
58201413928	SELECTOR, CHANNEL, 61A1-2MX 522-6472-004, 13499		*	*	2	2
58201413939	SELECTOR, CHANNEL, 61A1-4MX 522-6473-004, 13499		*	*	2	2
58201413940	SELECTOR, CHANNEL, 61A1-6MX 522-6475-004, 13499		*	*	2	2
58201413941	MONITOR, PULSE, 7A11-MX 522-6503-003, 13499		*	*	2	2
58201413942	ALARM, PULSE, 73T1-MX 522-6555-003, 13499		*	*	2	2
58201413943	OSCILLATOR, SYNCH, 68K1-1MX 522-5089-003, 13499		2	2	4	8
58201413945	PICKOFF, PILOT, 53D1-1MX 522-5384-003, 13499		*	*	2	2
58201974468	OPERATOR, PULSE, 68E3-MX 5317-003, 13499		*	*	2	2
58201974479	SIGNALING OSCILLATOR, 60D1-6MX 522-5399-003, 13499		2	2	3	6
58202578418	SELECTOR, CHANNEL, 61A1-5MX 522-6474-004, 13499		*	*	2	2
58207674807	CARD ASSEMBLY, LOW POWER ALARM 515-6012-011, 13499		*	2	3	5
58207674877	AMPLIFIER, OUTPUT, 70 MEGACYCLE 522-5740-005, 13499		*	2	3	5
58207683977	MONITOR, 76A1-TH 522-5737-003, 13499		*	2	3	5
58207885906	AMPLIFIER, BASE BAND, 24A1-TH 522-5734-003, 13499		2	2	3	6
58207885908	CONVERTER, 59A1-TH 522-5724-005, 13499		2	3	7	13
58207977192	COMBINER, 20A1-TH 522-5666-003, 13499		*	*	2	2
58207977221	AMPLIFIER SUBASSEMBLY, LIMITER 515-7447-001, 13499		2	4	10	18
58207949913	REGULATOR, 12A1-TH 522-5736-004, 13499		*	2	3	5
58209123248	MONITOR ASSEMBLY 522-5738-003, 13499		*	2	2	3
58209150074	PANEL ASSEMBLY, PATCH, 27D2-MX 522-5184-003, 13499		*	*	2	2
58209952330	MODULE, PANEL-FAULT 774-5889-001, 13499		*	2	3	5
58957661382	CHANNEL, MODEM 30F3-1MX 522-5241-004, 13499		*	2	3	5
58957661641	CHANNEL, MODEM 30F3-2MX CH2 522-5242-004, 13499		*	2	3	5
58957661648	CHANNEL, MODEM 30F2-3MX CH3 522-5243-004, 13499		*	2	3	5
58957661649	CHANNEL, MODEM 30F3-12MX CH12 522-5252-004, 13499		*	2	3	5
58957661652	CHANNEL, MODEM 30F3-11MX CH11 522-5251-004, 13499		*	2	3	5
58957674626	MODULATOR, REDUNDANT 33E1-4MX 522-6794-003, 13499		*	*	2	2

SECTION II PRESCRIBED LOAD ALLOWANCE (CONTINUED)

(1) FEDERAL STOCK NUMBER	(2) DESCRIPTION	USABLE ON CODE	(3) 15 DAY GRC MAINTENANCE ALLOWANCE			
			(a) 1-5	(b) 6-20	(c) 21-50	(d) 51-100
88957687438	CHANNEL, MODER 10P3-4MX CMB 522-5240-006, 13499	*	2	5	5	
88957687431	CHANNEL, MODER 10P3-10MX CMB 522-5240-006, 13499	*	2	3	5	
88957687432	CHANNEL, MODER 10P3-4MX CMB 522-5240-006, 13499	2	8	7	25	
88957687433	CHANNEL, MODER 10P3-4MX CMB 522-5240-006, 13499	*	-	3	5	
88957687434	CHANNEL, MODER 10P3-7MX CMB 522-5240-006, 13499	*	2	3	5	
88957687435	CHANNEL, MODER 10P3-9MX CMB 522-5240-006, 13499	*	2	3	5	
88957687436	CHANNEL, MODER 10P3-5MX CMB 522-5240-006, 13499	*	2	3	5	
88957929745	OSCILLATOR, SIGNAL, 60D1-2MX 522-6667-003, 13499	2	2	3	6	
88957929751	REGULATOR, SWITCHING, 10E1-MX 522-5259-003, 13499	*	*	2	2	
88957950013	SWITCH, BASE GROUP, 10G1-MX 522-5701-006, 13499	*	*	*	2	
88957964221	SIGNALING UNIT, 10E1-MX 522-5600-006, 13499	*	*	2	2	
88959372721	GENERATOR, 4 MC PULSE, 68D3, 2MX 758-5482-003, 13499	*	*	2	2	
88959372722	SELECTOR, PLS FLT, 45E1-MX 522-6459-013, 13499	*	*	2	2	
88959372725	TERMINATION UNIT, 10D3-MX 758-5489-001, 13499	*	*	2	2	
88959974698	OSCILLATOR ASSEMBLY, TUNE-UP 769-5260-001, 13499	*	2	3	5	
59201474837	FUSE, CARTRIDGE 112-062, 75915	2	2	6	11	
59202254996	FUSE, UNIT 11C4-MX 522-5316-004, 13499	*	*	*	2	
59202287882	FUSE, CARTRIDGE MDL2, 71400	*	*	2	2	
59202804465	FUSE, CARTRIDGE FO2A25OV1AS, 81349	2	2	3	6	
59202805031	FUSE, CARTRIDGE FO2A25OV1-4AS, 81349	2	4	11	20	
59202805062	FUSE, CARTRIDGE 312002, 75915	*	2	2	3	
59202849493	FUSE, CARTRIDGE FO2A25OV1-8AS, 81349	3	8	20	38	
59202961519	FUSE, CARTRIDGE 312005, 75915	2	2	3	6	
59205569947	FUSE, CARTRIDGE AGC1-4, 71400	2	2	3	6	
59206820330	FUSE CARTRIDGE AGC175-1000, 71400	*	*	2	2	
59207356457	FUSE, CARTRIDGE AGC250-3, 71400	*	*	*	2	
59208779934	FUSE, CARTRIDGE FO2A25OV3AS, 81349	*	2	2	3	
59350587112	PATCH UNIT, B/G MOD 27B1-MX 522-6359-004, 13499	*	*	*	2	

SECTION II **PRESCRIBED LOAD ALLOWANCE** (CONTINUED)

(1) FEDERAL STOCK NUMBER	(2) DESCRIPTION	USABLE ON CODE	(3) 15-DAY ORG MAINTENANCE ALLOWANCE			
			(a) 1-5	(b) 6-20	(c) 21-50	(d) 51-100
59402007302	LAMP, INCANDESCENT 47, 41349		*	*	2	2
59402006384	ELECTRON TUBE 5670, 41349		2	3	9	16
59402541740	ELECTRON TUBE 5663-49671		2	2	3	6
59402611357	ELECTRON TUBE 5654-49671, 41349		*	2	2	3
59402609371	ELECTRON TUBE 5651, 49671		*	*	1	2
59405561306	ELECTRON TUBE 64L5, 49671		*	2	2	3
59405781652	ELECTRON TUBE 6364, 41349		*	2	2	3
5940646619	ELECTRON TUBE 12AY7, 02735		2	2	4	8
5985238028	DISCRIMINATOR SUB-ASSEMBLY, A2 515-7444-001, 13499		2	3	7	13
61109637956	RECTIFIER, POWER, 12D3-ME 522-5315-003, 13499		*	*	2	2
62107775507	LIGHT, INDICATOR 183-9730-1471, 72619		*	*	2	2
62109886742	LAMP, INDICATOR ME2B, 08805		*	2	3	5
62401557836	LAMP, INCANDESCENT MS25237-327, 96906		*	*	2	2
62401557967	LAMP, INCANDESCENT 1817, 08806		*	*	2	2
62407978606	LAMP, INCANDESCENT MS15579-1, 96906		*	*	2	2
62408514352	LAMP, INCANDESCENT 330, 24455		*	2	2	3
62409651497	LAMP, INCANDESCENT 40A15-1, 08805		2	2	2	8
66259372459	MODULATOR, SIGNAL GROUP 522-5053-005, 13499		*	*	2	2

SECTION IV

SPECIAL TOOLS, TEST & SUPPORT EQUIPMENT FOR ORGANIZATIONAL MAINTENANCE

(1) SAR CODE INDEX NO.	(2) FEDERAL STOCK NUMBER	(3) DESCRIPTION Reference Number & AF C. No. USABLE OR CODE	(4) UNIT OF ISSUE	(5) QTY INC IN UNIT	(6) 15-DAY ORGANIZATIONAL MAINTENANCE ALW.				(7) ILLUSTRATIONS	
					(a) 1-5	(b) 6-20	(c) 21-50	(d) 51-100	(a) PIC. NO.	(b) ITEM NO. OR REFERENCE SYMBOL
		NO SPECIAL TOOL, TEST AND SUPPORT EQUIPMENT IS REQUIRED WITH THIS EQUIPMENT								

SECTION IV REPAIR PARTS FOR ORGANIZATIONAL MAINTENANCE

(1) SAR CODE INDEX NO.	(2) FEDERAL STOCK NUMBER	(3) DESCRIPTION Reference Number & Alt Code	(4) UNIT OF MEASURE	(5) QTY INC IN UNIT	(6) 15-DAY ORGANIZATIONAL MAINTENANCE ALW				(7) ILLUSTRATIONS	
					(a) 1-5	(b) 6-20	(c) 21-50	(d) 51-100	(a) FIG NO.	(b) ITEM NO OR REFERENCE DESIGNATION
A O P 4001	58201681544	RADIO TERMINAL SET AN/TRE-129A 758-5075-003,13499 THIS ITEM IS NONREPENDABLE TECHNICAL MANUAL TM 11-5620-726-20P REQUISITION THROUGH PINPOINT ACCOUNT NUMBER IS ASSIGNED; OTHERWISE THROUGH NEAREST ADJUTANT GENERAL FACILITY. NOTE: A QUANTITY OF ONE TECHNICAL MANUAL IS PACKED WITH EACH EQUIPMENT. WHERE A VOLUME NEED EXISTS, ADDITIONAL COPIES MAY BE REQUISITIONED AND KEPT ON HAND.	EA							
P O C992	53556854688	KNOB MS91528-1C18,96906	EA	1	*	*	*	*	-12 1-3	2A13A10A13MP2
A O P D877		LIGHT, MODIFIED 556-5436-001,13499	EA	4						2A13A98A46
A O P D882		FIXTURE, LIGHTING L18566,76033	EA	1						2A13A98A46XDS1
P O D885	62409651497	LAMP, INCANDESCENT 40A15-1,08805	EA	8	2	2	4	8	-12 3-51	2A13A98A46DS1
P O D886	62409651497	LAMP, INCANDESCENT SAME AS D885	EA	REF					-12 3-51	2A13A98A46DS2
A O P D887		LIGHT, MODIFIED SAME AS D877	EA	REF						2A13A98A47
A O P D888		LIGHT, MODIFIED SAME AS D877	EA	REF						2A13A98A48
A O P D889		LIGHT, MODIFIED SAME AS D877	EA	REF						2A13A98A49
A O P D890		LIGHT, MODIFIED 556-5436-002,13499	EA	3						2A13A98A50
A O P D895		FIXTURE, LIGHTING SAME AS D882	EA	1						2A13A98A50XDS1
A O P D900		LIGHT, MODIFIED 556-5436-003,13499	EA	1						2A13A98A53

SECTION IV REPAIR PARTS FOR ORGANIZATIONAL MAINTENANCE (CONTINUED)

(1) SAB CODE INDEX NO.	(2) FEDERAL STOCK NUMBER	(3) DESCRIPTION Reference Number & Mfr Code	(4) USABLE OR CODE	(5) UNIT OF ISSUE	(6) QTY INC IN UNIT	(6) 15-DAY ORGANIZATIONAL MAINTENANCE ALW.				(7) ILLUSTRATIONS FIG. NO.	(8) ITEM NO. OR REFERENCE DESIGNATION
						(a) 1-5	(b) 6-20	(c) 21-50	(d) 51-100		
A O R E905		FEATURE, LIGHTING SAME AS 0002		EA	1						2A13A1053A051
A O R E936	59200413539	RADIO SET, AMP/PC47 GFP.		EA	1						2A3
A O R E937		BATTERY AND CHARGER, MODIFIED 750-1061-001,13499		EA	1						2A2
A O R E938		BATTERY-CHARGER SET 26191,55933		EA	1						2A2A1
A O R E938		CHARGER ASSEMBLY 28178,55933		EA	1						2A2A1A3
A O R E903		COVER, ASSEMBLY 26468,55933		EA	1						2A2A3
P O E445	59202961519	FUSE, CARTRIDGE 312005,75915		EA	1	2	2	3	6	-12 3-54	2A2A3A1F1
P O E453	62408514352	LAMP, INCANDESCENT 330,24455		EA	2		2	2	3	-12 3-54	2A2A3A1D51
P O E454	62408514352	LAMP, INCANDESCENT SAME AS E453		EA	REF					-12 3-54	2A2A3A1D52
P O E643	59202805031	FUSE, CARTRIDGE F02A250V1-4AS,81349		EA	4	2	4	11	20	-12 3-45	2A18F1
P O E644	59202805031	FUSE, CARTRIDGE SAME AS E643		EA	REF					-12 3-45	2A18F2
P O E645	59202805031	FUSE, CARTRIDGE SAME AS E643		EA	REF					-12 3-45	2A18F3
P O E646	59202805031	FUSE, CARTRIDGE SAME AS E643		EA	REF					-12 3-45	2A18F4
P O E652	53555560145	KNOB, CONTROL MS91528-1K2B,96906		EA	1					-12 3-45	2A18MP3
P O E653	62109888742	LAMP, INDICATOR NE2D,08805		EA	4		2	3	5	-12 3-45	2A18D51
P O E654	62109888742	LAMP, INDICATOR SAME AS E653		EA	REF					-12 3-45	2A18D52
P O E655	62109888742	LAMP, INDICATOR SAME AS E653		EA	REF					-12 3-45	2A18D53
P O E656	62109888742	LAMP, INDICATOR SAME AS E653		EA	REF					-12 3-45	2A18D54
P O E664	62109888742	LAMP, INDICATOR SAME AS E653		EA	1					-12 3-45	2A18XD54A
A O R E708		MULTIPLEX, MX-106 771-6327-001,13499		EA	1						2A12
A O R E713		RACK, SUPER GROUP, BASE GROUP 771-6326-001,13499		EA	1						2A12A1

SECTION IV

REPAIR PARTS FOR ORGANIZATIONAL MAINTENANCE (CONTINUED)

(1) SAR CODE	(2) FEDERAL STOCK NUMBER	(3) DESCRIPTION Reference Number & Mfg. Code	(4) UNIT OF ISSUE	(5) QTY INC IN UNIT	(6) 15-DAY ORGANIZATIONAL MAINTENANCE ALW				(7) ILLUSTRATIONS	
					(a) 1-5	(b) 6-20	(c) 21-50	(d) 51-1	(a) FIG NO	(b) ITEM NO OR REFERENCE DESIGNATION
A C E741		PANEL ASSEMBLY, WIRED 516-0371-404, 13499	EA	1						2A12A1A1
P C E766	53557281323	KNOB, LOCK, MOLDED SAME AS E766	EA	10	*	*	2	2		2A12A1A1MP4
P C E768	53557281327	KNOB, LOCK, MOLDED SAME AS E766	EA	REF						2A12A1A1MP5
P C E770	53557281323	KNOB, LOCK, MOLDED SAME AS E766	EA	REF						2A12A1A1MP6
P C E772	53557281323	KNOB, LOCK, MOLDED SAME AS E766	EA	REF						2A12A1A1MP7
P C E774	53557281323	KNOB, LOCK, MOLDED SAME AS E766	EA	REF						2A12A1A1MP8
P C E776	53557281323	KNOB, LOCK, MOLDED SAME AS E766	EA	REF						2A12A1A1MP9
P C E778	53557281323	KNOB, LOCK, MOLDED SAME AS E766	EA	REF						2A12A1A1MP10
P C E780	53557281323	KNOB, LOCK, MOLDED SAME AS E766	EA	REF						2A12A1A1MP11
P C E782	53557281323	KNOB, LOCK, MOLDED SAME AS E766	EA	REF						2A12A1A1MP12
P C E784	53557281323	KNOB, LOCK, MOLDED SAME AS E766	EA	REF						2A12A1A1MP13
P C R E840	61109857956	REGULATOR, POWER, 1203-MX 522-5315-003, 13499	EA	8	*	*	2	2	-12 1-5	2A12A1A1A1
A C R E842		PANEL ASSEMBLY, WIRED 516-1563-001, 13499	EA	1						2A12A1A1A1A1
A C R E859		PANEL, POWER REGULATOR 516-1543-002, 13499	EA	1						2A12A1A1A1A1A5
P C E862	59202287882	FUSE, CARTRIDGE MDL2, 71400	EA	1	*	*	2	2	-35 16-4	2A1A1A1A1A5F5
P C R E885	61109857956	REGULATOR, POWER, 1203-MX SAME AS E840	EA	REF					-12 1-5	2A12A1A1A2
P C R E886	61109857956	REGULATOR, POWER, 1203-MX SAME AS E840	EA	REF					-12 1-5	2A12A1A1A3
P C E887	59201999498	FUSE, CARTRIDGE MDL1-2, 71400	EA	2	*	*	*	*		2A12A1A1F1
P C E888	59201319816	FUSE, CARTRIDGE MDL1, 71400	EA	2	*	*	*	*		2A12A1A1F3
P C R E889	61109857956	REGULATOR, POWER, 1203-MX SAME AS E840	EA	REF					-12 1-5	2A12A1A1A5
P C R E890	61109857956	REGULATOR, POWER, 1203-MX SAME AS E840	EA	REF					-12 1-5	2A12A1A1A6

SECTION IV

REPAIR PARTS FOR ORGANIZATIONAL MAINTENANCE (CONTINUED)

(1) PART CODE	(2) FEDERAL STOCK NUMBER	(3) DESCRIPTION Reference Number & Mfr Code	(4) UNIT OF ISSUE	(5) QTY REQ IN UNIT	(6) 15-DAY ORGANIZATIONAL MAINTENANCE AL#					(7) ILLUSTRATIONS		
					(a) 1-5	(b) 6-20	(c) 21-50	(d) 51-100	(e) 101-150	(f) 151-200	(g) FIG. NO.	(h) ITEM NO. OR REFERENCE DESIGNATION
P O E891	61109857956	REGULATOR, POWER, E203-MA SAME AS E840	EA	REF							-122A12A1A1A7 16-5	
P O E892	5920199498	FUSE, CARTRIDGE SAME AS E887	EA	REF							2A12A1A1F2	
P O E893	61109857956	REGULATOR, POWER, E203-MA SAME AS E840	EA	REF							-122A12A1A1A8 16-5	
P O E894	59201319816	FUSE, CARTRIDGE SAME AS E888	EA	REF							2A12A1A1F4	
P O E895	59202254996	FUSE UNIT 11C4-MX 522-5316-004, 13499	EA	1	0	0	0	0	2		-122A12A1A1A9 16-5	
P O E922		PANEL, FUSE UNIT 514-1534-001, 13499	EA	1							2A12A1A1A7A3	
P O E925	59201215509	FUSEHOLDER HMLEJQRMAA27, 71400	EA	2	0	0	0	0	0		-35A12A1A1A9A3XF01 16-5	
P O E926	59206820330	FUSE, CARTRIDGE AGC175-1000, 71400	EA	2	0	0	0	2	2		-35A12A1A1A9A3F1C1 16-5	
P O E927	59201215509	FUSEHOLDER SAME AS E925	EA	REF							-35A12A1A1A9A3XF102 16-5	
P O E928	59206820330	FUSE, CARTRIDGE SAME AS E926	EA	REF							-35A12A1A1A9A3F1C2 16-5	
P O E930		FUSE, CARTRIDGE FO2A250VIAS, 81349	EA	1	2	2	3	6			-35A12A1A1A9A3F1C5 16-5	
P O E932		FUSE, CARTRIDGE FO2A250V3-4AS, 81349	EA	2	0	0	0	2			-35A12A1A1A9A3F1C6 16-5	
P O E934		FUSE, CARTRIDGE SAME AS E932	EA	REF							-35A12A1A1A9A3F1C8 16-5	
P O E936		FUSE, CARTRIDGE FO2A250V1-2AS, 81349	EA	1	0	0	0	0			-35A12A1A1A9A3F1C7 16-5	
P O E938		FUSE, CARTRIDGE FO2A250V1-4AS, 81349	EA	1	2	4	11	20			-35A12A1A1A9A3F1C3 16-5	
P O E940		FUSE, CARTRIDGE SAME AS E926	EA	1							-35A12A1A1A9A3F1C4 16-5	
P O E941	59202287882	FUSE, CARTRIDGE SAME AS E862	EA	REF							-35A12A1A1A9A3F9 16-5	
P O E942	59202287882	FUSE, CARTRIDGE SAME AS E862	EA	REF							-35A12A1A1A9A3F1C 16-5	
P O E943	59202287882	FUSE, CARTRIDGE SAME AS E867	EA	REF							-35A12A1A1A9A3F11 16-5	
P O E944	59202287882	FUSE, CARTRIDGE SAME AS E862	EA	REF							-35A12A1A1A9A3F12 16-5	
P O E945	59202287882	FUSE, CARTRIDGE SAME AS E862	EA	REF							-35A12A1A1A9A3F13 16-5	

SECTION IV

REPAIR PARTS FOR ORGANIZATIONAL MAINTENANCE (CONTINUED)

(1) SIR CODE	(2) FEDERAL STOCK NUMBER	(3) DESCRIPTION Reference Number & Mfr Code	(4) USABLE ON CODE	(5) UNIT CF ISSUE	(6) QTY INC IN UNIT	(8) 15-DAY ORGANIZATIONAL MAINTENANCE ALLOW.				(7) ILLUSTRATIONS	
						(a) 1-5	(b) 6-20	(c) 21-50	(d) 51-100	(a) FIG. NO.	(b) ITEM NO. OR REFERENCE DESIGNATION
P O E946	59207354457	FUSE, CARTRIDGE AGC250-3,71400		EA	2	*	*	*	2	-35 16-5	A12A1A1A9A3F14
P O E947	59207356457	FUSE, CARTRIDGE SAME AS E946		EA	REF					-35 16-5	A12A1A1A9A3F15
P O E948		FUSE, CARTRIDGE MTH250-4, 71400		EA	1	2	2	3	4	-35 16-5	A12A1A1A9A3F16
P O E972	585201413925	POWER METERING UNIT 522-6635-004,13499		EA	1	*	*	*	*	-12 1-5	A12A1A1A1C
P O F010		KNOB, ROUND MS91528-1C2B,96906		EA	1	*	*	*	*	-35 16-5	A12A1A1A1CHP5
A O F011		PANEL, POWER METERING UNIT 565-6430-003,13499		EA	1						A12A1A1A10A4
A O F029		SHELF ASSEMBLY, WIRED 518-0371-344,13499		EA	1						A12A1A2
P O F068	53557281323	KNOB, LOCK, MOLDED SAME AS 7E66		EA	12						A12A1A2MP4
P O F070	53557281323	KNOB, LOCK, MOLDED SAME AS E766		EA	REF						A12A1A2MP5
P O F072	53557281323	KNOB, LOCK, MOLDED SAME AS E766		EA	REF						A12A1A2MP6
P O F074	53557281323	KNOB, LOCK, MOLDED SAME AS E766		EA	REF						A12A1A2MP7
P O F076	53557281323	KNOB, LOCK, MOLDED SAME AS E766		EA	REF						A12A1A2MP8
P O F078	53557281323	KNOB, LOCK, MOLDED SAME AS E766		EA	REF						A12A1A2MP9
P O F080	53557281323	KNOB, LOCK, MOLDED SAME AS E766		EA	REF						A12A1A2MP10
P O F082	53557281323	KNOB, LOCK, MOLDED SAME AS E766		EA	REF						A12A1A2MP11
P O F084	53557281323	KNOB, LOCK, MOLDED SAME AS E766		EA	REF						A12A1A2MP12
P O F086	53557281323	KNOB, LOCK, MOLDED SAME AS E766		EA	REF						A12A1A2MP13
P O F088	53557281323	KNOB, LOCK, MOLDED SAME AS E766		EA	REF						A12A1A2MP14
P O F090	53557281323	KNOB, LOCK, MOLDED SAME AS E766		EA	REF						A12A1A2MP15
P O F151	558209158674	PANEL ASSEMBLY, PATCH, 27D2-MX 522-5184-003,13499		EA	1	*	*	2	2	-12 1-5	A12A1A2A1
P O F193	66259372459	MODULATOR, SIGNAL GROUP 522-5053-005,13499		EA	1	*	*	2	2	-12 1-5	A12A1A2A2

SECTION IV

REPAIR PARTS FOR ORGANIZATIONAL MAINTENANCE (CONTINUED)

(1) SAR CODE INDEX NO.	(2) FEDERAL STOCK NUMBER	(3) DESCRIPTION Reference Number & Mfr Code	(4) USABLE ON CODE	(5) QTY INC IN UNIT ISSUE	(6) 15-DAY ORGANIZATIONAL MAINTENANCE ALLOW				(7) ILLUSTRATIONS	
					(a) 1-5	(b) 6-20	(c) 21-50	(d) 51-100	(a) FIG. NO.	(b) ITEM NO OR REFERENCE DESIGNATION
P O F256	58052799119	AMPLIFIER, GROUP, 55W2-MX 522-6465-003,13493		EA			2	3	5	-122A12A1A2B3 1-7
P O F275	58052759816	AMPLIFIER, GROUP, 55W2-MX 522-6465-003,13493		EA	REF					-122A12A1A2B5 1-7
P O F377	58150512826	AMPLIFIER, ALARM UNIT 7351-2MX 522-6620-003,13499		EA	2			2	4	-122A12A1A2B5 1-7
A O F397		PANEL ASSEMBLY, WIRED 565-7935-005,13499		EA	1					2A12A1A2A51
P O F481	82401557836	LAMP, INCANDESCENT MS25237-327,96906		EA	1			2	2	-122A12A1A2A1051 1-7
P O F508	58201413927	MONITOR, GROUP, 18F3-MX 522-6815-003,13499		EA	1				2	-122A12A1A2A6 1-7
P O F729	28201413928	MONITOR, DEMOD, 78F1-2MX 522-6497-004,13499		EA	1			2	2	-122A12A1A2A7 1-7
A O F736		PANEL ASSEMBLY, S/G MONITOR 566-1287-005,13499		EA	1					2A12A1A2A7A1
P O F860	58150512827	AMPLIFIER, ALARM UNIT 735S1-1MX 522-619-003,13499		EA	2			2	2	-122A12A1A2A8 1-7
A O F973		PANEL ASSEMBLY, WIRED SAME AS F397		EA	1					2A12A1A2A8A1
P O G096	58052759119	AMPLIFIER, GROUP, 55W1-MX SAME AS F256		EA	REF					-122A12A1A2A9 1-5
P O G097	58052759119	AMPLIFIER, GROUP, 55W1-MX SAME AS F256		EA	REF					-122A12A1A2A10 1-9
P O G098	58059372729	MODULATOR, DEMOD 36D1-MX 758-4747-001,13499		EA	1			2	2	-122A12A1A2A11 1-5
P O G160	59350572360	PATCH UNIT, DEMOD, 27E1-MX 522-6426-003,13499		EA	1				*	-122A12A1A2A12 1-5
A O G181		SHELF ASSEMBLY, WIRED 518-0371-334,13499		EA	1					2A12A1A3
P O G207	53557281323	KNOB, LOCK, MOLDED SAME AS E766		EA	REF					2A12A1A3MP16
P O G209	53557281323	KNOB, LOCK, MOLDED SAME AS E766		EA	REF					2A12A1A3MP17
P O G211	53551281323	KNOB, LOCK, MOLDED SAME AS E766		EA	REF					2A12A1A3MP18
P O G213	53557281323	KNOB, LOCK, MOLDED SAME AS E766		EA	REF					2A12A1A3MP19
P O G215	53557281323	KNOB, LOCK, MOLDED SAME AS E766		EA	REF					2A12A1A3MP20
P O G217	53557281323	KNOB, LOCK, MOLDED SAME AS E766		EA	REF					2A12A1A3MP21

SECTION IV

REPAIR PARTS FOR ORGANIZATIONAL MAINTENANCE (CONTINUED)

(1) S&R CODE	(2) FEDERAL STOCK NUMBER	(3) DESCRIPTION Reference Number & Mfr Code	(4) USABLE ON CODE	(5) QTY INC IN UNIT	(6) 15-DAY ORGANIZATIONAL MAINTENANCE AL™				(7) ILLUSTRATIONS	
					(a) 1-5	(b) 6-20	(c) 21-50	(d) 51-100	(a) FIG. NO.	(b) ITEM NO. OR REFERENCE DESIGNATION
P C G219		KNOB, LOCK, MOLDED SAME AS E766		EA	REF					1A12A1A3MP22
P C G221		KNOB, LOCK, MOLDED SAME AS E766		EA	REF					1A12A1A3MP23
P C G223		KNOB, LOCK, MOLDED SAME AS E766		EA	REF					1A12A1A3MP24
P C G225	535572381323	KNOB, LOCK, MOLDED SAME AS E766		EA	REF					1A12A1A3MP25
P C G227	53557281323	KNOB, LOCK, MOLDED SAME AS E766		EA	REF					1A12A1A3MP26
P C G229		KNOB, LOCK, MOLDED SAME AS E766		EA	1					1A12A1A3MP27
P C G292	58957950013	SWITCH, BASE, GROUP, 18G1-MX 522-5701-004,13499		EA	1	*	*	*	2	-12 1-5 1A12A1A3A1
A C G274		PANEL, ASSEMBLY, WIRED 515-4779-003,13499		EA	1					1A12A1A3A1A1
P C G300	53556801357	KNOB, CONTROL MS91528-1F2B,96906		EA	2	*	*	*	2	-35 14-13 1A12A1A3A1A1MP1
P C G301	53556801357	KNOB, CONTROL SAME AS G300		EA	REF					-35 14-13 1A12A1A3A1A1MP2
P C G311	58957929758	REGULATOR, 57A1-7MX B/G REG 522-5147-004,13499		EA	4	*	*	*	*	-12 1-5 1A12A1A3A6
P C G442	58957929751	REGULATOR, SWITCHING, 18E1-MX 522-5599-C03,13499		EA	2	*	*		2	-12 1-5 1A12A1A3A7
A C G444		PANEL, WIRED 515-4740-003,13499		EA	1					2A12A1A3A7A1
P C G503	58957929751	REGULATOR, SWITCHING, 18E1-MX SAME AS G442		EA	REF					-12 1-5 1A12A1A3A1C
A C G528		SHELF, ASSEMBLY, WIRED 518-0371-354,13499		EA	1					2A12A1A7
P C G569	53557281323	KNOB, LOCK, MOLDED SAME AS E766		EA	12					2A12A1A7MP16
P C G571	53557281323	KNOB, LOCK, MOLDED SAME AS E766		EA	REF					2A12A1A7MP17
P C G573	53557281323	KNOB, LOCK, MOLDED SAME AS E766		EA	REF					2A12A1A7MP18
P C G575	53557281323	KNOB, LOCK, MOLDED SAME AS E766		EA	REF					2A12A1A7MP19
P C G577	53557281323	KNOB, LOCK, MOLDED SAME AS E766		EA	REF					2A12A1A7MP20
P C G579	53557281323	KNOB, LOCK, MOLDED SAME AS E766		EA	REF					2A12A1A7MP21

Section IV

REPAIR PARTS FOR ORGANIZATIONAL MAINTENANCE (CONTINUED)

(1) PART CODE	(2) FEDERAL STOCK NUMBER	(3) DESCRIPTION Reference Number & Mfr Code	(4) USABLE ON CODE	(5) QTY INC IN UNIT	(6) 15-DAY ORGANIZATIONAL MAINTENANCE ALW.				(7) ILLUSTRATIONS (a) FIG. NO	(8) ITEM NO. OR REFERENCE DESIGNATION	
					(a) 1-5	(b) 6-20	(c) 21-50	(d) 51-100			
P O G588	53557281323	KNOB, MOLDED SAME AS E166		EA	REF					2A12A1A7MP22	
P O G583	53557281323	KNOB, LOCK, MOLDED SAME AS E766		EA	REF					2A12A1A7MP23	
P O G585	53557281323	KNOB, LOCK, MOLDED SAME AS E766		EA	REF					2A12A1A7MP24	
P O G587	53557281323	KNOB, LOCK, MOLDED SAME AS E766		EA	REF					2A12A1A7MP25	
P O G589	53557281323	KNOB, LOCK, MOLDED SAME AS E766		EA	REF					2A12A1A7MP26	
P O G591	53557281323	KNOB, LOCK, MOLDED SAME AS E766		EA	REF					2A12A1A7MP27	
P O G645	59350587112	PATCH UNIT, 8 GMOD 27B 522-6359-004,13499		EA	1	*	*	*	2	-12 1-5	2A12A1A7A1
P O R G675	58957674626	MODULATOR, REDUNDANT 33E1-4MX 322-6794-003,13499		EA	1	*	*	*	2	-12 1-5	2A12A1A7A2
P O R G739	58052759119	AMPLIFIER, GROUP, 55W1-MX SAME AS F256		EA	REF					-12 1-5	2A12A1A7A3
P O R G740	58052759119	AMPLIFIER, GROUP, SAME AS F256		EA	REF					-12 1-5	2A12A1A7A4
P O R G741	58150512827	ALARM UNIT, 8/G73S1-1MX SAME AS F860		EA	REF					-12 1-5	2A12A1A7A5
P O R G742	58201413924	MONITOR, B/G MODIFIED 522-6365-004,13499		EA	1	*	*	*	2	-12 1-5	2A12A1A7A6
P O G779		KNOB, ROUND SAME AS F010		EA	1						Text 2A12A1A7A6A1MP2 Text
P O R G853	58050539065	ALARM, MONITOR DEMOD 522-6367-003,13499		EA	1	*	*	*	*	-12 1-5	2A12A1A7A7
A O R G854		PANEL ASSEMBLY, WIRED 565-4184-004-13499		EA	1						2A12A1A7A7A1
P O G896		KNOB, ROUND SAME AS F010		EA	1					-35 14-11	2A12A1A7A7A1MP2
P O R G976	58150512826	AMPLIFIER, ALARM UNIT 73S1-MX SAME AS F377		EA	REF					-12 1-5	2A12A1A7A8
P O R G977	58052759119	AMPLIFIER, GROUP, 55W1-MX SAME AS F256		EA	REF					-12 1-5	2A12A1A7A9
P O R G978	58052759119	AMPLIFIER, GROUP, 55W1-MX SAME AS F256		EA	REF					-12 1-5	2A12A1A7A10
A O R G981		PANEL ASSEMBLY, WIRED 565-9708-004,13499		EA	1						2A12A1A7A11A1
P O H035	59350572362	PATCH UNIT, DEMOD, 27C1-MX 522-6360-004,13499		EA	1	*	*	*	*	-12 1-5	2A12A1A7A12

SECTION IV

REPAIR PARTS FOR ORGANIZATIONAL MAINTENANCE (CONTINUED)

(1) SUC CODE	(2) FEDERAL STOCK NUMBER	(3) DESCRPT Reference Number & Mfr Code	(4) UNIT OF ISSUE	(5) QTY INC IN UNIT	(6) 15-DAY ORGANIZATIONAL MAINTENANCE ALW				(7) ILLUSTRATIONS	
					(a) 1-5	(b) 6-20	(c) 21-50	(d) 51-100	(a) FIG. NO.	(b) ITEM NO OR REFERENCE DESIGNATION
A C R HQ68		SHELF ASSEMBLY, WIRED 518-0371-364,13499	EA	1						2A12A1A8
P C H100	53557281323	KNOB, LOCK, MOLDED SAME AS E766	EA	12						2A12A1A8MP19
P C H102	53557281323	KNOB, LOCK, MOLDED SAME AS E766	EA	REF						2A12A1A8MP20
P C H104	53557281323	KNOB, LOCK, MOLDED SAME AS E766	EA	REF						2A12A1A8MP21
P C H106	53557281323	KNOB, LOCK, MOLDED SAME AS E766	EA	REF						2A12A1A8MP22
P C H108	53557281323	KNOB, LOCK, MOLDED SAME AS E766	EA	REF						2A12A1A8MP23
P C H110	53557281323	KNOB, LOCK, MOLDED SAME AS E766	EA	REF						2A12A1A8MP24
P C H112	53557281323	KNOB, LOCK, MOLDED SAME AS E766	EA	REF						2A12A1A8MP25
P C H114	53557281323	KNOB, LOCK, MOLDED SAME AS E766	EA	REF						2A12A1A8MP26
P C H116	53557281323	KNOB, LOCK, MOLDED SAME AS E766	EA	REF						2A12A1A8MP27
P C H118	53557281323	KNOB, LOCK, MOLDED SAME AS E766	EA	REF						2A12A1A8MP28
P C H120	53557281323	KNOB, LOCK, MOLDED SAME AS E766	EA	REF						2A12A1A8MP29
P C H122	53557281323	KNOB, LOCK, MOLDED SAME AS E766	EA	REF						2A12A1A8MP30
P O R H177	58957661382	CHANNEL, MODEM 30P3-1MX 522-5241-004,13499	EA	1	*	2	3	5	-12 1-5	2A12A1A8A1
P O R H543	58957661641	CHANNEL, MODEM 30P3-2MX CH2 522-5242-004,13499	EA	1	*	2	3	5	-12 1-5	2A12A1A8A2
P O R H798	58957661648	CHANNEL, MODEM 30P3-3MX CH3 522-5243-004,13499	EA	1	*	2	3	5	-12 1-5	2A12A1A8A3
P O R I058	58957674638	CHANNEL, MODEM 30P3-4MX CH4 522-5244-004,13499	EA	1	*	2	3	5	-12 1-5	2A12A1A8A4
P O R I317	58957687436	CHANNEL, MODEM 30P3-5MX 522-5245-004,13499	EA	1	*	2	3	5	-12 1-5	2A12A1A8A5
P O R I572	58957687433	CHANNEL, MODEM 30P3-6MX CH6 522-5246-004,13499	EA	1	*	2	3	5	-12 1-5	2A12A1A8A6
P O R I827	50957687434	CHANNEL, MODEM 30P3-7MX CH7 522-5247-004,13499	EA	1	*	2	3	5	-12 1-5	2A12A1A8A7
P O R J082	589579687432	CHANNEL, MODEM 30P3-MX CH8 522-5248-004,13499	EA	1	2	3	7	13	-12 1-5	2A12A1A8A8

SECTION IV

REPAIR PARTS FOR ORGANIZATIONAL MAINTENANCE (CONTINUED)

(1) NAE CODE INDEX NO.	(2) FEDERAL STOCK NUMBER	(3) DESCRIPTION Reference Number & Alt Code	(4) UNIT OF ISSUE	(5) QTY INC IN UNIT	(6) 15 DAY ORGANIZATIONAL MAINTENANCE ALLOW				(7) ILLUSTRATIONS	
					(a) 1-2	(b) 3-20	(c) 21-50	(d) 51-100	(a) FIG NO.	(b) FIG NO OR REFERENCE DESIGNATION
P D K435	5895796482	CHANNEL, MODEM SOP-12MX CMB1 522-5250-004, 13499	EA	1	*	2	1	5	-122A12A1A44	
P D K436	5895796482	CHANNEL, MODEM SOP-12MX CMB1 522-5250-004, 13499	EA	1	*	2	1	5	-122A12A1A44	
P D K437	5895796482	CHANNEL, MODEM SOP-12MX CMB1 522-5250-004, 13499	EA	1	*	2	1	5	-122A12A1A44	
P D K438	5895796482	CHANNEL, MODEM SOP-12MX CMB2 522-5252-004, 13499	EA	1	*	2	1	5	-122A12A1A42	
P D K439	5895796482	CHANNEL, MODEM SOP-12MX CMB2 522-5252-004, 13499	EA	1	*	2	1	5	-122A12A1A42	
P D K440	5355728132	KNOR, LOCK, MOLDED SAME AS E766	EA	REF					2A12A1A9MP19	
P D K441	5355728132	KNOR, LOCK, MOLDED SAME AS E766	EA	REF					2A12A1A9MP20	
P D K442	5355728132	KNOR, LOCK, MOLDED SAME AS E766	EA	REF					2A12A1A9MP21	
P D K443	5355728132	KNOR, LOCK, MOLDED SAME AS E766	EA	REF					2A12A1A9MP22	
P D K444	5355728132	KNOR, LOCK, MOLDED SAME AS E766	EA	REF					2A12A1A9MP23	
P D K445	5355728132	KNOR, LOCK, MOLDED SAME AS E766	EA	REF					2A12A1A9MP24	
P D K446	5355728132	KNOR, LOCK, MOLDED SAME AS E766	EA	REF					2A12A1A9MP25	
P D K447	5355728132	KNOR, LOCK, MOLDED SAME AS E766	EA	REF					2A12A1A9MP26	
P D K448	5355728132	KNOR, LOCK, MOLDED SAME AS E766	EA	REF					2A12A1A9MP27	
P D K449	5355728132	KNOR, LOCK, MOLDED SAME AS E766	EA	REF					2A12A1A9MP28	
P D K450	5355728132	KNOR, LOCK, MOLDED SAME AS E766	EA	REF					2A12A1A9MP29	
P D K451	5355728132	KNOR, LOCK, MOLDED SAME AS E766	EA	REF					2A12A1A9MP30	
P D K469	5895796482	SIGNALING UNIT, 20H3-MX 522-5600-004, 13499	EA	12	*	*	2	2	-122A12A1A9A1 1-5	
P D K577	5895796482	SIGNALING UNIT, 20H3-MX SAME AS K469	EA	REF					-122A12A1A9A2 1-5	
P D K578	5895796482	SIGNALING UNIT, 20H3-MX SAME AS K469	EA	REF					-122A12A1A9A3 1-5	
P D K579	5895796482	SIGNALING UNIT, 20H3-MX SAME AS K469	EA	REF					-122A12A1A9A4 1-5	

SECTION IV

REPAIR PARTS FOR ORGANIZATIONAL MAINTENANCE (CONTINUED)

(1) SAR CODE	(2) FEDERAL STOCK NUMBER	(3) DESCRIPTION Reference No., Unit & Mfr. Code	(4) USABLE ON CODE	(5) UNIT OF ISSUE	(6) QTY INC ON UNIT	(7) ORGANIZATIONAL MAINTENANCE ALPH					(8) CLASSIFICATIONS	
						(a)	(b)	(c)	(d)	(e)	(9) FIG NO	(10) ITEM NO OR REFERENCE DESIGNATION
						1-5	6-20	21-30	31-100			
P C R K580	58957964823	SIGNALING UNIT, 20M3-MA SAME AS K469		EA	REF							122A12A1858 1-5
P C R K581	58957964823	SIGNALING UNIT, 20M3-MA SAME AS K469		EA	REF							122A12A1858 1-5
P C R K582	58957964823	SIGNALING UNIT, 20M3-MA SAME AS K469		EA	REF							122A12A1858 1-5
P C R K583	58957964823	SIGNALING UNIT, 20M3-MA SAME AS K469		EA	REF							122A12A1858 1-5
P C R K584	58957964823	SIGNALING UNIT, 20M3-MA SAME AS K469		EA	REF							122A12A1858 1-5
P C R K585	58957964823	SIGNALING UNIT, 20M3-MA SAME AS K469		EA	REF							122A12A1858 1-5
P C R K586	58957964823	SIGNALING UNIT, 20M3-MA SAME AS K469		EA	REF							122A12A1858 1-5
P C R K587	58957964823	SIGNALING UNIT, 20M3-MA SAME AS K469		EA	REF							122A12A1858 1-5
P C R K588		SHELF ASSEMBLY, WIRED 518-0371-184, 13499		EA	1							2A12A181C
P C K606	53557281323	KNOB, LOCK, MOLDED SAME AS E766		EA	12							2A12A1A1CMP16
P C K608	53557281323	KNOB, LOCK, MOLDED SAME AS E766		EA	REF							2A12A1A1CMP17
P C K610	53557281323	KNOB, LOCK, MOLDED SAME AS E766		EA	REF							2A12A1A1CMP18
P C K612	53557281323	KNOB, LOCK, MOLDED SAME AS E766		EA	REF							2A12A1A1CMP19
P C K614	53557281323	KNOB, LOCK, MOLDED SAME AS E766		EA	REF							2A12A1A1CMP20
P C K616	53557281323	KNOB, LOCK, MOLDED SAME AS E766		EA	REF							2A12A1A1CMP21
P C K618	53557281323	KNOB, LOCK, MOLDED SAME AS E766		EA	REF							2A12A1A1CMP22
P C K620	53557281323	KNOB, LOCK, MOLDED SAME AS E766		EA	REF							2A12A1A1CMP23
P C K622	53557281323	KNOB, LOCK, MOLDED SAME AS E766		EA	REF							2A12A1A1CMP24
P C K624	53557281323	KNOB, LOCK, MOLDED SAME AS E766		EA	REF							2A12A1A1CMP25
P C K626	53557281323	KNOB, LOCK, MOLDED SAME AS E766		EA	REF							2A12A1A1CMP26
P C K628	53557281323	KNOB, LOCK, MOLDED SAME AS E766		EA	REF							2A12A1A1CMP27

SECTION IV

REPAIR PARTS FOR ORGANIZATIONAL MAINTENANCE (CONTINUED)

(1) SAGE CODE	(2) FEDERAL STOCK NUMBER	(3) DESCRIPTION Reference Number & Mfr Code	(4) USABLE OR CODE	(5) QTY INC OR UNIT	(6) 15-DAY ORGANIZATIONAL MAINTENANCE ALY.				(7) ILLUSTRATIONS	
					(a) 1-3	(b) 4-20	(c) 21-50	(d) 51-100	(a) FIG. NO.	(b) ITEM NO. OR REFERENCE DESIGNATION
P O R K688	58959372725	TERMINATION UNIT, 1903-MX 750-7480-001, 13499		EA	12	*	*	2	2	-122A12A1A10A1 1-5
P O R K918	58959372725	TERMINATION UNIT, 1903-MX SAME AS K688		EA	REF					-122A12A1A10A2 1-5
P O R K919	58959372725	TERMINATION UNIT, 1903-MX SAME AS K688		EA	REF					-122A12A1A10A3 1-5
P O R K920	58959372725	TERMINATION UNIT, 1903-MX SAME AS K688		EA	REF					-122A12A1A10A4 1-5
P O R K921	58959372725	TERMINATION UNIT, 1903-MX SAME AS K688		EA	REF					-122A12A1A10A5 1-5
P O R K922	58959372725	TERMINATION UNIT, 1903-MX SAME AS K688		EA	REF					-122A12A1A10A6 1-5
P O R K923	58959372725	TERMINATION UNIT, 1903-MX SAME AS K688		EA	REF					-122A12A1A10A7 1-5
P O R K924	58959372725	TERMINATION UNIT, 1903-MX SAME AS K688		EA	REF					-122A12A1A10A8 1-5
P O R K925	58959372725	TERMINATION UNIT, 1903-MX SAME AS K688		EA	REF					-122A12A1A10A9 1-5
P O R K926	58959372725	TERMINATION UNIT, 1903-MX SAME AS K688		EA	REF					-122A12A1A10A10 1-5
P O R K927	5895937.725	TERMINATION UNIT, 1903-MX SAME AS K688		EA	REF					-122A12A1A10A11 1-5
P O R K928	58959372725	TERMINATION UNIT, 1903-MX SAME AS K688		EA	REF					-122A12A1A10A12 1-5
A O R L235		RACK, BASE GROUP, 3 CHANNEL 771-6328-001, 13499		EA	1					2A12A2
A O R L263		VOLTMETER UNIT, SELECTIVE 774-9220-001, 13499		EA	1					2A12A2A1
A O R L272		VOLTMETER, FREQUENCY SELECTIVE 3131, 18410		EA	1					2A12A2A1A2
A O R L273		AMPLIFIER, INTERMEDIATE FREQ 3121A4, 18410		EA	1					2A12A2A1A2A4
P O L326		KNOB, BAR 5658-1188519-595.75376		EA	1	*	*	2	2	-352A12A2A1A2A4MP1 18-22
P O L440		KNOB, BAR SAME AS L326		EA	1					-352A12A2A1A2A5MP1 18-22
P O L674		KNOB, BAR SAME AS L326		EA	1					-352A12A2A1A2A3MP1 18-21
P O L799		KNOB, BAR SAME AS L326		EA	1					-352A12A2A1A2A1MP13 18-19
A O R L864		PANEL ASSEMBLY, FRONT 3131-11ASSY, 18410		EA	1					2A12A2A1A2A12

(1) SAR CODE INDEX NO.	(2) FEDERAL STOCK NUMBER	(3) DESCRIPTION Reference Number & Mfr Code	(4) UNIT OF ISSUE USABLE ON CODE	(5) QTY INC IN UNIT	(6) 15-DAY ORGANIZATIONAL MAINTENANCE ALM.				(7) ILLUSTRATIONS (8) ITEM NO OR REFERENCE DESIGNATION
					(a) 1-5	(b) 6-30	(c) 31-50	(d) 51-100	
P O L871	59205569947	FUSE, CARTRIDGE AGC1-4, 71400	EA	1	2	2	3	6	-352A12A2A1A2A12F1 18-19
P O L874		KNOB, BAR SAME AS L 726	EA	1					-352A12A2A1A2A12M4E 18-19
P O L876		KNOB, ROUND S645-1L595, 75376	EA	1	*	*	*	*	-352A12A2A1A2A17M7 18-19
A O P L909		PARTITION, LID 3121-793, 18410	EA	1					2A12A2A1A2M44
P O L909		FUSEHOLDER 357001, 75915	EA	1	2	2	3	6	-352A12A2A1A2A6F1 18-23
P O L910	59202808342	FUSE, CARTRIDGE AGC1, 71400	EA	1	*	*	*	*	-352A12A2A1A2A6F1 18-23
A O P L975		MEASURING SET, TRANSMISSION H09-3550A, 78480	EA	1					2A12A2A2
A O P L979	66250651532	OSCILLATOR, RADIO FREQUENCY H20-2046, 14493	EA	1					2A12A2A2A1
P O M102	53559336838	KNOB 0370-0062, 28480	EA	1	*	*	*	*	-352A12A2A2A1MP25 18-13
P O M104	53558099329	KNOB 0370-0084, 28480	EA	1	*	*	*	*	-352A12A2A2A1MP3C 18-13
P O M106	53557603248	KNOB 0370-0087, 28480	EA	1	*	*	*	*	-352A12A2A2A1MP21 18-13
A O P M207		PANEL, PATCH H03-353A, 14493	EA	1					2A12A2A2A2
P O M265	53559073460	KNOB 0370-0046, 28480	EA	4	*	*	*	*	-352A12A2A2A2M1C 18-11
P O M267	53559073460	KNOB SAME AS M265	EA	REF					-352A12A2A2A2M17 18-11
P O M269	53559073460	KNOB SAME AS M265	EA	REF					-352A12A2A2A2M1E 18-11
P O M271	53559073460	KNOB SAME AS M265	EA	REF					-352A12A2A2A2M15 18-11
A O P M365	66257274695	VOLTMETER, ELECTRONIC 403B, 14493	EA	1					2A12A2A2A3
P O M492	59201424837	FUSE, CARTRIDGE 312-062, 75915	EA	2	2	2	6	11	-352A12A2A2A3F1 18-17
P O M495	59201424837	FUSE, CARTRIDGE SAME AS M492	EA	REF					-352A12A2A2A3F2 18-17
P O M498	62109941165	INDICATOR, LIGHT 599-124, 72765	EA	1	*	*	*	*	-352A12A2A2A3D51 18-17
P O M506	53557603248	KNOB SAME AS M106	EA	1					-352A12A2A2A3M22 18-17

SECTION II

REPAIR PARTS FOR ORGANIZATIONAL MAINTENANCE (CONTINUED)

(1) FAR CODE	(2) FEDERAL STOCK NUMBER	(3) DESCRIPTION Reference Number & Mfr Code	(4) UNIT OF ISSUE CABLE OR CODE	(5) QTY INC IN UNIT	(6) ORGANIZATIONAL MAINTENANCE ALM				(7) ILLUSTRATIONS	
					(a) A-2	(b) A-20	(c) Z1-50	(d) Z1-101	(a) FIG NO	(b) ITEM NO OR REFERENCE DESIGNATION
P O M600		PANEL ASSEMBLY, WIRED SAME AS G521	EA	1						-122A12A2A7 L-1
P O M601	7400087112	PATCH UNIT, MODIFIED, 2761-MX SAME AS G445	EA	1						-122A12A2A7A L-1
P O M602	7400796400	MODULATOR, RED, 3461-3MA 52-6788-003, 13497	EA	1	*	*	*	*		-122A12A2A7A2 L-1
P O M603		PANEL ASSEMBLY, WIRED SAME AS F981	EA	1						2A12A2A7A1
P O M604	740052759119	AMPLIFIER, GROUP, 55W1-MX SAME AS F256	EA	REF						-122A12A2A7A3 L-1
P O M605	7405052222	ALARM UNIT, 8/G735-3MA SAME AS F460	EA	1						-122A12A2A7A5 L-1
P O M606	7401974476	ALARM AND MONITOR, 7801-3MA 52-6765-001, 13499	EA	1	*	*	*	*		-122A12A2A7A6 L-1
P O M607	74050539065	ALARM, MONITOR DEMO, 7801-3MA SAME AS G451	EA	1						-122A12A2A7A7 L-1
P O M608	7405052826	ALARM UNIT, GROUP, 7301-2MX SAME AS F177	EA	1						-122A12A2A7A8 L-1
P O M609	74052759119	AMPLIFIER, GROUP, 55W1-MX SAME AS F256	EA	REF						-122A12A2A7A9 L-1
P O M610	74052759119	AMPLIFIER, GROUP, 55W1-MX SAME AS F256	EA	REF						-122A12A2A7A10 L-1
P O M611	7405761651	MODULATOR, REDUNDANT, 33E1-3MA 52-6793 103, 13499	EA	1	*	*	*	*		-122A12A2A7A11 L-1
P O M612	5355728132	PATCH UNIT, DEMO, 2761-MX SAME AS M035	EA	1						-122A12A2A7A12 L-1
A O M613		SHELF ASSEMBLY, WIRED, 80F1-MX 518-0371-434, 13499	EA	1						2A12A2A8
P O M721	5355728132	KNOB, LOCK, MOLDED SAME AS E766	EA	12						2A12A2A8MP16
P O M723	5355728132	KNOB, LOCK, MOLDED SAME AS E766	EA	REF						2A12A2A8MP17
P O M725	5355728132	KNOB, LOCK, MOLDED SAME AS E766	EA	REF						2A12A2A8MP18
P O M727	5355728132	KNOB, LOCK, MOLDED SAME AS E766	EA	REF						2A12A2A8MP19
P O M729	5355728132	KNOB, LOCK, MOLDED SAME AS E766	EA	REF						2A12A2A8MP20

SECTION IV

REPAIR PARTS FOR ORGANIZATIONAL MAINTENANCE (CONTINUED)

(1) SAR CODE	(2) FEDERAL STOCK NUMBER	(3) DESCRIPTION Reference Number & Mfr. Code	(4) UNIT OF ISSUE	(5) QTY INC IN UNIT	(6) 15-DAY ORGANIZATIONAL MAINTENANCE ALLOW				(7) ILLUSTRATIONS	
					(a) 1-5	(b) 6-20	(c) 21-50	(d) 51-100	(a) FIG NO	(b) ITEM NO OR REFERENCE DESIGNATION
P C M791	5557281925	KNUR. LOCK, MOLDED SAME AS E788	EA	REF						2A12A2A8P21
P C M792	5557281927	KNUR. LOCK, MOLDED SAME AS E788	EA	REF						2A12A2A8P22
P C M793	5557281928	KNUR. LOCK, MOLDED SAME AS E788	EA	REF						2A12A2A8P23
P C M794	5557281929	KNUR. LOCK, MOLDED SAME AS E788	EA	REF						2A12A2A8P24
P C M795	5557281931	KNUR. LOCK, MOLDED SAME AS E788	EA	REF						2A12A2A8P25
P C M796	5557281923	KNUR. LOCK, MOLDED SAME AS E788	EA	REF						2A12A2A8P26
P C M797	5557281924	KNUR. LOCK, MOLDED SAME AS E788	EA	REF						2A12A2A8P27
P C R M805	58957661892	CHANNEL, MODEM, 3CP-1MA SAME AS H371	EA	1					-12	2A12A2A8A1
P C R M806	58957661641	CHANNEL, MODEM, 3CP3-2MX CH2 SAME AS H543	EA	1					-12	2A12A2A8A2
P C R M807	58957661642	CHANNEL, MODEM, 3CP3-3MX CH3 SAME AS H798	EA	1					-12	2A12A2A8A3
P C R M808	58957674632	CHANNEL, MODEM, 3CP3-4MX CH4 SAME AS I058	EA	1					-12	2A12A2A8A4
P C R M809	58957687436	CHANNEL, MODEM, 3CP3-5MX CH5 SAME AS I117	EA	1					-12	2A12A2A8A5
P C R M810	58957687431	CHANNEL, MODEM, 3CP3-10MX CH10 SAME AS J590	EA	1					-12	2A12A2A8A1C
P C R M811	58957687433	CHANNEL, MODEM, 3CP3-6MX CH6 SAME AS I572	EA	1					-12	2A12A2A8A6
P C R M812	58957687434	CHANNEL, MODEM, 3CP3-7MX CH7 SAME AS I827	EA	1					-12	2A12A2A8A7
P C R M813	58957687432	CHANNEL, MODEM, 3CP3-8MX CH8 SAME AS J092	EA	1					-12	2A12A2A8A8
P C R M814	58957687435	CHANNEL, MODEM, 3CP3-9MX CH9 SAME AS J335	EA	1					-12	2A12A2A8A9
P C R M815	58957661652	CHANNEL, MODEM, 3CP3-11MX CH11 SAME AS J845	EA	1					-12	2A12A2A8A11
P C R M816	58957661649	CHANNEL, MODEM, 3CP3-12MX CH12 SAME AS K100	EA	1					-12	2A12A2A8A12
A C M817		SHELF ASSEMBLY, WIRED SAME AS K355	EA	1						2A12A2A9
P C R M818	58957964823	CONVERTER, SIGNAL, 20H3-MX SAME AS K469	EA	12					-12	2A12A2A9A1

(1) SAGE CODE	(2) FEDERAL TOUCH NUMBER	(3) DESCRIPTION Reference Number & Mfr Code	(4) USABLE ON CODE	(5) QTY REQ IN UNIT	(6) 15-DAY ORGANIZATIONAL MAINTENANCE A&W				(7) ILLUSTRATIONS	
					(a) 1-5	(b) 6-20	(c) 21-50	(d) 51-100	(a) FIG. NO.	(b) ITEM NO. OR REFERENCE DESIGNATION
P O R M810	58957964823	CONVERTER, SIGNAL, 20M3-MX SAME AS K469		EA	REF					-122A12A2A9A2 1-6
P O R M820	58957964823	CONVERTER, SIGNAL, 20M3-MX SAME AS K469		EA	REF					-122A12A2A9A3 1-6
P O R M821	58957964823	CONVERTER, SIGNAL, 20M3-MX SAME AS K469		EA	REF					-122A12A2A9A4 1-6
P O R M822	58957964823	CONVERTER, SIGNAL, 20M3-MX SAME AS K469		EA	REF					-122A12A2A9A5 1-6
P O R M823	58957964823	CONVERTER, SIGNAL, 20M3-MX SAME AS K469		EA	REF					-122A12A2A9A6 1-6
P O R M824	58957964823	CONVERTER, SIGNAL, 20M3-MX SAME AS K469		EA	REF					-122A12A2A9A7 1-6
P O R M825	58957964823	CONVERTER, SIGNAL, 20M3-MX SAME AS K469		EA	REF					-122A12A2A9A8 1-6
P O R M826	58957964823	CONVERTER, SIGNAL, 20M3-MX SAME AS K469		EA	REF					-122A12A2A9A9 1-6
P O R M827	58957964823	CONVERTER, SIGNAL, 20M3-MX SAME AS K469		EA	REF					-122A12A2A9A10 1-6
P O R M828	58957964823	CONVERTER, SIGNAL, 20M3-MX SAME AS K469		EA	REF					-122A12A2A9A11 1-6
P O R M829	58957964823	CONVERTER, SIGNAL, 20M3-MX SAME AS K469		EA	REF					-122A12A2A9A12 1-6
A O R M830		SHELF ASSEMBLY, WIRED SAME AS K588		EA	1					2A12A2A10
A O R M960		RACK, FREQUENCY GEN AND POWER 771-6329-001,13499		EA	1					2A12A3
A O R M992		POWER DISTRIBUTOR, 80G6-MX 518-0371-444,13499		EA	1					2A12A3A1
A O R N001		POWER DISTRIBUTION UNIT 80G6MX 522-6642-004,13499		EA	1					2A12A3A1A1
A O R N141		POWER REGULATOR, 80K2-MX 518-0371-394,13499		EA	1					2A12A3A2
P O N157	53557281323	KNOB, LOCK, MOLDED SAME AS E766		EA	10					-352A12A3A2MP15 16-7
P O N158	53557281323	KNOB, LOCK, MOLDED SAME AS E766		EA	REF					-352A12A3A2MP16 16-7
P O N159	53557281323	KNOB, LOCK, MOLDED SAME AS E766		EA	REF					-352A12A3A2MP17 16-7
P O N160	53557281323	KNOB, LOCK, MOLDED SAME AS E766		EA	REF					-352A12A3A2MP18 16-7
P O N161	53557281323	KNOB, LOCK, MOLDED SAME AS E766		EA	REF					-352A12A3A2MP19 16-7

SECTION IV REPAIR PARTS FOR ORGANIZATIONAL MAINTENANCE (CONTINUED)

(1) SAC CODE	(2) FEDERAL STOCK NUMBER	(3) DESCRIPTION Reference Number & Air Code	(4) UNIT OF ISSUE	(5) QTY INC IN UNIT	(6) 12-MONTH ORGANIZATIONAL MAINTENANCE ALLOW				(7) ILLUSTRATIONS	
					(a) 1-5	(b) 6-20	(c) 21-50	(d) 51-100	(a) FIG NO	(b) ITEM NO OR REFERENCE DESIGNATION
P O N162	53557281323	KNOB, LOCK, MOLDED SAME AS E766	EA	REF						-122A12A3A2MP7C 1-7
P O N163	53557281323	KNOB, LOCK, MOLDED SAME AS E766	EA	REF						-122A12A3A2MP21 1-7
P O N164	53557281323	KNOB, LOCK, MOLDED SAME AS E766	EA	REF						-122A12A3A2MP22 1-7
P O N165	53557281323	KNOB, LOCK, MOLDED SAME AS E766	EA	REF						-122A12A3A2MP23 1-7
P O N166	53557281323	KNOB, LOCK, MOLDED SAME AS E766	EA	REF						-122A12A3A2MP24 1-7
P O R N234	61109857956	POWER REGULATOR, 12D3-MX SAME AS E840	EA	8						-122A12A3A2A1 1-7
P O R N235	61109857956	POWER REGULATOR, 12D3-MX SAME AS E840	EA	REF						-122A12A3A2A2 1-7
P O R N236	61109857956	POWER REGULATOR, 12D3-MX SAME AS E840	EA	REF						-122A12A3A2A3 1-7
P O R N237	61109857956	POWER REGULATOR, 12D3-MX SAME AS E840	EA	REF						-122A12A3A2A4 1-7
P O R N238	61109857956	POWER REGULATOR, 12D3-MX SAME AS E840	EA	REF						-122A12A3A2A5 1-7
P O R N239	61109857956	POWER REGULATOR, 12D3-MX SAME AS E840	EA	REF						-122A12A3A2A6 1-7
P O R N240	61109857956	POWER REGULATOR, 12D3-MX SAME AS E840	EA	REF						-122A12A3A2A7 1-7
P O R N241	61109857956	POWER REGULATOR, 12D3-MX SAME AS E840	EA	REF						-122A12A3A2A8 1-7
P O R N242	59202254996	FUSE UNIT, 11C4-MX SAME AS E895	EA	1						-122A12A3A2A9 1-7
P O R N243	58201413925	POWER METERING UNIT, 76A2-MX SAME AS E972	EA	1						-122A12A3A2A1C 1-7
A O R N244		SHelf ASSEMBLY WIRED 518-0371-324,13499	EA	1						2A12A3A3
P O N262	53557281323	KNOB, LOCK, MOLDED SAME AS E766	EA	12						-122A12A3A3MP15 1-7
P O N263	53557281323	KNOB, LOCK, MOLDED SAME AS E766	EA	REF						-122A12A3A3MP16 1-7
P O N264	53557281323	KNOB, LOCK, MOLDED SAME AS E766	EA	REF						-122A12A3A3MP17 1-7
P O N265	53557281323	KNOB, LOCK, MOLDED SAME AS E766	EA	REF						-122A12A3A3MP18 1-7
P O N266	53557281323	KNOB, LOCK, MOLDED SAME AS E766	EA	REF						-122A12A3A3MP19 1-7

(1) S&R CODE INDEX NO	(2) FEDERAL STOCK NUMBER	(3) DESCRIPTION Reference Number & Mfg Code	(4) USABLE ON CODE	(5) QTY INC ON UNIT	(6) 15-DAY ORGANIZATIONAL MAINTENANCE ALY				(7) ILLUSTRATION FIG NO	(8) ITEM NO OR REFERENCE DESIGNATION
					(a) 1-5	(b) 6-20	(c) 21-50	(d) 51-100		
P O N556	53557281323	KNOB, LOCK, MOLDED SAME AS E766		EA	REF					2A12A3A4MP11
P O N557	53557281323	KNOB, LOCK, MOLDED SAME AS E766		EA	REF					2A12A3A4MP12
P O N558	53557281323	KNOB, LOCK, MOLDED SAME AS E766		EA	REF					2A12A3A4MP13
P O N559	53557281323	KNOB, LOCK, MOLDED SAME AS E766		EA	REF					2A12A3A4MP20
P O N560	53557281323	KNOB, LOCK, MOLDED SAME AS E766		EA	REF					2A12A3A4MP21
P O N561	53557281323	KNOB, LOCK, MOLDED SAME AS E766		EA	REF					2A12A3A4MP22
P O N562	53557281323	KNOB, LOCK, MOLDED SAME AS E766		EA	REF					2A12A3A4MP23
P O N563	53557281323	KNOB, LOCK, MOLDED SAME AS E766		EA	REF					2A12A3A4MP24
P O N564	53557281323	KNOB, LOCK, MOLDED SAME AS E766		EA	REF					2A12A3A4MP25
P O R N631		OSCILLATOR, PILOT, 62P1-MX 522-6476-003,13499		EA	2	*	4	2	2	-12A12A3A4A4 1-7
A O R N638		PANEL ASSEMBLY, WIRED 515-5110-003,13499		EA	1					2A3A4A4A1
P O N667	62401557836	LAMP, INCANDESCENT SAME AS F481		EA	1					-352A 2A3A4A4A1DS1 11-13
P O R N750	58201413943	OSCILLATOR-SYNCH, 69K2-1MX 522-5089-003,13499		EA	2	2	2	4	8	-12A12A3A4A2 1-7
A O R N769		PANEL ASSEMBLY, WIRED 566-2569-004,13499		EA	1					2A12A3A4A2A1
P O R N913	58959372722	SELECTOR, PLS PLT, 45E1-MX 522-6459-013,13499		EA	2	*	*	2	2	-12A12A3A4A3 1-7
A O R N926		PANEL ASSEMBLY, WIRED 565-4648-004,13499		EA	1					2A12A3A4A3A1
P O R N942		OSCILLATOR, PILOT, 62P1-MX SAME AS N631		EA	REF					-12A12A3A4A1 1-7
P O R N944	58959372722	SELECTOR, PLS PLT, 45E1-MX SAME AS N913		EA	REF					-12A12A3A4A6 1-7
P O N945	58957885596	SYNCHRONIZER, CONTROL 566-6585-004,13499		EA	1	*	*	*	*	-12A12A3A4A7 1-7
P O R N962	58201413945	PICKOFF, PILOT, 53D5-1MX 522-5384-003,13499		EA	2	*	*	2	2	-12A12A3A4A10 1-7
A O R N968		PANEL ASSEMBLY, WIRED 516-4753-003,13499		EA	1					2A12A3A4A10A1

SECTION IV

REPAIR PARTS FOR ORGANIZATIONAL MAINTENANCE (CONTINUED)

(1) SAR CODE	(2) FEDERAL STOCK NUMBER	(3) DESCRIPTION Reference Number & Mfr Code	(4) USABLE ON CODE	(5) QTY INC OR UNIT	(6) 15 DAY ORGANIZATIONAL MAINTENANCE AL#				(7) ILLUSTRATIONS		
					(a) 1-5	(b) 6-20	(c) 21-50	(d) 51-100	(a) FIG NO.	(b) ITEM NO OR REFERENCE DESIGNATION	
P O R 0020	58201413945	PECKOFF, PILOT, 5305-1MX SAME AS N962		EA	REF					-12 1-7	2A12A3A4A11
P O R 0028		SHLEF ASSEMBLY, WIRED 518-0371-415,13499		EA	1						2A12A3A5
P O R 0048	53557281323	KNOB, LOCK, MOLDED SAME AS E766		EA	9						2A12A3A5MP12
P O R 0049	53557281323	KNOB, LOCK, MOLDED SAME AS E766		EA	REF						2A12A3A5MP13
P O R 0050	53557281323	KNOB, LOCK, MOLDED SAME AS E766		EA	REF						2A12A3A5MP14
P O R 0051	53557281323	KNOB, LOCK, MOLDED SAME AS E766		EA	REF						2A12A3A5MP15
P O R 0052	53557281323	KNOB, LOCK, MOLDED SAME AS E766		EA	REF						2A12A3A5MP16
P O R 0053	53557281323	KNOB, LOCK, MOLDED SAME AS E766		EA	REF						2A12A3A5MP17
P O R 0054	53557291323	KNOB, LOCK, MOLDED SAME AS E766		EA	REF						2A12A3A5MP18
P O R 0055	53557281323	KNOB, LOCK, MOLDED SAME AS E766		EA	REF						2A12A3A5MP19
P O R 0056	53557281323	KNOB, LOCK, MOLDED SAME AS E766		EA	REF						2A12A3A5MP20
P O R 0150	58051413931	MONITOR, ALARM, J KC, 78H1-MX 522-6507-003,13499		EA	1	*	*	2	2	-12 1-7	2A12A3A5A1
A O R 0151		PANEL ASSEMBLY WIRED 565-4470-004,13499		EA	1						2A12A3A5A1A1
P O R 0267	58959372721	GENERATOR, 4 KC PULSE,6803-2MX 758-5482-003,13499		EA	2	*	*	2	2	-12 1-7	2A12A3A5A2
A O R 0298		PANEL, 4 KC PULSE GENERATOR 556-5532-002,13499		EA	1						2A12A3A5A2A3
P O R 0390	58201413936	SELECTOR, CHANNEL, 61A1-1MX 522-6470-004,13499		EA	1	*	*	2	2	-12 1-7	2A12A3A5A3
P O R 0423	58201413937	SELECTOR, CHANNEL, 61A1-2MX 522-6471-004,13499		EA	1	*	*	2	2	-12 1-7	2A12A3A5A4
P O R 0431	58201413938	SELECTOR, CHANNEL, 61A1-3MX 522-6472-004,13499		EA	1	*	*	2	2	-12 1-7	2A12A3A5A5
P O R 0439	58201413939	SELECTOR, CHANNEL, 61A1-4MX 522-6473-004,13499		EA	1	*	*	2	2	-12 1-7	2A12A3A5A6
P O R 0447	58202578418	SELECTOR, CHANNEL, 61A1-5MX 522-6474-004,13499		EA	1	*	*	2	2	-12 1-7	2A12A3A5A7
P O R 0455	58201413940	SELECTOR, CHANNEL, 61A1-6MX 522-6475-004,13499		EA	1	*	*	2	2	-12 1-7	2A12A3A5A8

SECTION IV

REPAIR PARTS FOR ORGANIZATIONAL MAINTENANCE (CONTINUED)

(1) SAR CODE	(2) FEDERAL STOCK NUMBER	(3) DESCRIPTION Reference Number & Mfr Code	(4) USABLE ON CODE	(5) QTY INC IN UNIT	(6) 15-DAY ORGANIZATIONAL MAINTENANCE ALW.				(7) ILLUSTRATIONS	
					(a) 1-5	(b) 6-20	(c) 21-50	(d) 51-100	(a) FIG NO	(b) ITEM NO OR REFERENCE DESIGNATION
P O 0463	58959372721	GENERATOR, PULSE, 68E3-2MX SAME AS 0267		EA REF					-12 1-7	2A12A3A5A9
A O 0464		PANEL ASSEMBLY, WIRED 518-0371-425,13499		EA 1						2A12A3A6
P O 0483	53557281323	KNOB, LOCK-MOLDED SAME AS E766		EA 11						2A12A3A6MP16
P O 0485	53557281323	KNOB, LOCK-MOLDED SAME AS E766		EA REF						2A12A3A6MP17
P O 0487	53557281323	KNOB, LOCK-MOLDED SAME AS E766		EA REF						2A12A3A6MP18
P O 0489	53557281323	KNOB, LOCK-MOLDED SAME AS E766		EA REF						2A12A3A6MP19
P O 0491	53557281323	KNOB, LOCK-MOLDED SAME AS E766		EA REF						2A12A3A6MP20
P O 0493	53557281323	KNOB, LOCK-MOLDED SAME AS E766		EA REF						2A12A3A6MP21
P O 0495	53557281323	KNOB, LOCK-MOLDED SAME AS E766		EA REF						2A12A3A6MP22
P O 0497	53557281323	KNOB, LOCK-MOLDED SAME AS E766		EA REF						2A12A3A6MP23
P O 0499	53557281323	KNOB, LOCK-MOLDED SAME AS E766		EA REF						2A12A3A6MP24
P O 0501	53557281323	KNOB, LOCK-MOLDED SAME AS E766		EA REF						2A12A3A6MP25
P O 0503	53557281323	KNOB, LOCK-MOLDED SAME AS E766		EA REF						2A12A3A6MP26
P O 0505	53557281323	PLATE, CARD GUIDE SAME AS H124		EA 1						2A12A3A6MP27
P O 0563	58201413941	MONITOR PULSE, 78J1-RX 522-6508-003, 13499		EA 1	*	*	2	2	-12 1-7	2A12A3A6A1
A O 0565		PANEL ASSEMBLY, WIRED 565-5931-004, 13499		EA 1						2A12A3A6A1A1
P O 0603	58201413941	ALARM, PULSE, 73T1-MX 522-6555-003, 13499		EA 1	*	*	2	2	-12 1-7	2A12A3A6A2
A O 0605		PANEL ASSEMBLY, WIRED 565-6445-004, 13499		EA 1						2A12A3A6A2A1
P O 0659	58201974468	GENERATOR, PULSE, 68E3-MX 522-5317-003, 13499		EA 2	*	*	2	2	-12 1-7	2A12A3A6A3
A O 0662		PANEL ASSEMBLY, WIRED 516-1561-001, 13499		EA 1						2A12A3A6A3A1
P O 0750	58201413933	SELECTOR, 8/G, 63C1-MX 522-6480-004, 13499		EA 1	*	*	2	2	-12 1-7	2A12A3A6A4

SECTION IV

REPAIR PARTS FOR ORGANIZATIONAL MAINTENANCE (CONTINUED)

(1) SAR CODE	(2) FEDERAL STOCK NUMBER	(3) DESCRIPTION Reference Number & Mfr Code	(4) USABLE ON CODE	(5) QTY (INC IN UNIT	(6) 15-DAY ORGANIZATIONAL MAINTENANCE ALW				(7) ILLUSTRATIONS	
					(a) 1-5	(b) 6-20	(c) 21-50	(d) 51-100	(a) FIG NO.	(b) ITEM NO OR REFERENCE DESIGNATION
A O 0759		PANEL ASSEMBLY, WIRED, SEL 565-8017-004, 13499	EA	1						2A12A306411
P O 0808	59201481914	SELECTOR, B/G, 63C1-4MX 522-648E-004, 13499	EA	1	*	*	2	2	-12	2A12A30607 L-7
A O 0817		PANEL ASSEMBLY, WIRED, SEL SAME AS 0759	EA	1						2A12A3065A1
P O 0862	59201974468	GENERATOR, PULSE, 68E1-MX SAME AS 0859	EA	REF					-12	2A12A306A11 L-7
A O 0940		POWER SUPPLY 271431, 55814	EA	1						2A12A306P1
A O P032		RACK, EQUIPMENT 515-6026-C01, 13499	EA	1						2A4
A O P053	59957929770	PANEL, MONITOR 515-6009-C01, 13499	EA	1						2A4A1
A O P056		ANALYZER, DISTORTION, MODIFIED 566-7809-C03, 13499	EA	1						2A4A1A1
A O P057		ANALYZER, DISTORTION, ITY MODEL DA2, 96238	EA	1						2A4A1A1A1
A O P078		CHASSIS, ELECTRICAL EQUIPMENT 620002440C1, 96238	EA	1						2A4A1A1A1A2
P O P125		ELECTRON TUBE DA2, 81349	EA	1	*	*	2	2	-35	2A4A1A1A1A2V11 4-8
P O P126		ELECTRON TUBE DB2, 81349	EA	1	*	*	2	2	-35	2A4A1A1A1A2V2 4-8
P O P127	59608466619	ELECTRON TUBE 12AT7, 02735	EA	3	2	2	4	8	-35	2A4A1A1A1A2V1 4-8
P O P128	59608466619	ELECTRON TUBE SAME AS P127	EA	REF					-35	2A4A1A1A1A2V3 4-8
P O P129	59608466619	ELECTRON TUBE SAME AS P127	EA	REF					-35	2A4A1A1A1A2V8 4-8
P O P130		ELECTRON TUBE 6X4W, 33173	EA	1	*	2	2	3	-35	2A4A1A1A1A2V1C 4-8
P O P131	59605561308	ELECTRON TUBE 6AL5, 49671	EA	1	*	2	2	3	-35	2A4A1A1A1A2V4 4-8
P O P132	59602541740	ELECTRON TUBE 5963, 49671	EA	3	2	2	3	6	-35	2A4A1A1A1A2V5 4-8
P O P133	59602541740	ELECTRON TUBE SAME AS P132	EA	REF					-35	2A4A1A1A1A2V6 4-8
P O P134	59602541740	ELECTRON TUBE SAME AS P132	EA	REF					-35	2A4A1A1A1A2V7 4-8
P O P135	59605093171	ELECTRON TUBE 5651, 49671	EA	1	*	*	2	2	-35	2A4A1A1A1A2V12 4-8

SECTION IV

REPAIR PARTS FOR ORGANIZATIONAL MAINTENANCE (CONTINUED)

(1) S&R CODE	(2) FEDERAL STOCK NUMBER	(3) DESCRIPTION Reference Number & Mfr Code	(4) UNIT OF ISSUE	(5) QTY INC IN UNIT	(6) 15-DAY ORGANIZATIONAL MAINTENANCE ALW.				(7) ILLUSTRATIONS		
					USABLE ON CODE	(a) 1-5	(b) 6-20	(c) 21-50	(d) 51-100	(a) FIG NO.	(b) ITEM NO OR REFERENCE DESIGNATION
P O P138	59202805062	FUSE, CARTRIDGE 312002,75915	EA	1		2	2	3	6	-122A44A1A1A1P2F1 3-22	
A C P357		PANEL, FRONT 61020024,96238	EA	1						2A44A1A1A1A3	
P O P372	30305283828	KNOB, CONTROL 1700,76655	EA	7	*	*		2	2	-122A44A1A1A1A3E1 3-21	
P O P374	30305283828	KNOB, CONTROL SAME AS P372	EA	REF						-122A44A1A1A1A3E2 3-21	
P C P376	30305283828	KNOB, CONTROL SAME AS P372	EA	REF						-122A44A1A1A1A3E3 3-21	
P C P378	30305283828	KNOB, CONTROL SAME AS P372	EA	REF						-122A44A1A1A1A3E4 3-21	
P C P380	30305283828	KNOB, CONTROL SAME AS P372	EA	REF						-122A44A1A1A1A3E5 3-21	
P O P382	30305283828	KNOB, CONTROL SAME AS P372	EA	REF						-122A44A1A1A1A3E6 3-21	
P C P394	30305283828	KNOB, CONTROL SAME AS P372	EA	REF						-122A44A1A1A1A3E7 3-21	
P C P396		KNOB, POINTER 41C02,96238	EA	1	*	*	*	*	*	-122A44A1A1A1A3E8 3-21	
P O P399	5961007301	LAMP, INCANDESCENT 47,81349	EA	1	*	*		2	2	-122A44A1A1A1A3D51 3-21	
A C P466		LOOP CURRENT CONTROL 516-3989-C01,13499	EA	1						2A4A2	
P O P727	59202049493	FUSE, CARTRIDGE FO2A250V1-86S,81349	EA	32		3	8	20	38	-122A44A2F1 3-22	
P O P728	59202049493	FUSE, CARTRIDGE SAME AS P727	EA	REF						-122A44A2F2 3-22	
P O P729	59202849493	FUSE, CARTRIDGE SAME AS P727	EA	REF						-122A44A2F3 3-22	
P O P730	59202849493	FUSE, CARTRIDGE SAME AS P727	EA	REF						-122A44A2F4 3-22	
P C P731	59202049493	FUSE, CARTRIDGE SAME AS P727	EA	REF						-122A44A2F5 3-22	
P O P732	59202849493	FUSE, CARTRIDGE SAME AS P727	EA	REF						-122A44A2F6 3-22	
P O P733	59202849493	FUSE, CARTRIDGE SAME AS P727	EA	REF						-122A44A2F7 3-22	
P O P734	59202049493	FUSE, CARTRIDGE SAME AS P727	EA	REF						-122A44A2F8 3-22	
P O P735	59202849493	FUSE, CARTRIDGE SAME AS P727	EA	REF						-122A44A2F9 3-22	

SECTION IV

REPAIR PARTS FOR ORGANIZATIONAL MAINTENANCE (CONTINUED)

(1) UNIT CODE	(2) FEDERAL STOCK NUMBER	(3) DESCRIPTION Reference Number & Alt Code	(4) USABLE ON CODE	(5) QTY INC IN UNIT	(6) 15-DAY ORGANIZATIONAL MAINTENANCE ALN.				(7) CLASSIFICATIONS	
					(a) 1-5	(b) 6-20	(c) 21-50	(d) 51-100	(a) FIG. NO.	(b) ITEM NO. OR REFERENCE DESIGNATION
P 0 P736	59202849493	FUSE, CARTRIDGE SAME AS P727		EA	REF					-122A4A2F13 3-22
P 0 P737	59202849493	FUSE, CARTRIDGE SAME AS P727		EA	REF					-122A4A2F14 3-22
P 0 P738	59202849493	FUSE, CARTRIDGE SAME AS P727		EA	REF					-122A4A2F15 3-22
P 0 P739	59202849493	FUSE, CARTRIDGE SAME AS P727		EA	REF					-122A4A2F16 3-22
P 0 P740	59202849493	FUSE, CARTRIDGE SAME AS P727		EA	REF					-122A4A2F17 3-22
P 0 P741	59202849493	FUSE, CARTRIDGE SAME AS P727		EA	REF					-122A4A2F18 3-22
P 0 P742	59202849493	FUSE, CARTRIDGE SAME AS P727		EA	REF					-122A4A2F19 3-22
P 0 P743	59202849493	FUSE, CARTRIDGE SAME AS P727		EA	REF					-122A4A2F20 3-22
P 0 P744	59202849493	FUSE, CARTRIDGE SAME AS P727		EA	REF					-122A4A2F21 3-22
P 0 P745	59202849493	FUSE, CARTRIDGE SAME AS P727		EA	REF					-122A4A2F22 3-22
P 0 P746	59202849493	FUSE, CARTRIDGE SAME AS P727		EA	REF					-122A4A2F23 3-22
P 0 P747	59202849493	FUSE, CARTRIDGE SAME AS P727		EA	REF					-122A4A2F24 3-22
P 0 P748	59202849493	FUSE, CARTRIDGE SAME AS P727		EA	REF					-122A4A2F25 3-22
P 0 P749	59202849493	FUSE, CARTRIDGE SAME AS P727		EA	REF					-122A4A2F26 3-22
P 0 P750	59202849493	FUSE, CARTRIDGE SAME AS P727		EA	REF					-122A4A2F27 3-22
P 0 P751	59202849493	FUSE, CARTRIDGE SAME AS P727		EA	REF					-122A4A2F28 3-22
P 0 P752	59202849493	FUSE, CARTRIDGE SAME AS P727		EA	REF					-122A4A2F29 3-22
P 0 P753	59202849493	FUSE, CARTRIDGE SAME AS P727		EA	REF					-122A4A2F30 3-22
P 0 P754	59202849493	FUSE, CARTRIDGE SAME AS P727		EA	REF					-122A4A2F31 3-22
P 0 P755	59202849493	FUSE, CARTRIDGE SAME AS P727		EA	REF					-122A4A2F32 3-22
P 0 P756	59202849493	FUSE, CARTRIDGE SAME AS P727		EA	REF					-122A4A2F33 3-22

SECTION IV

REPAIR PARTS FOR ORGANIZATIONAL MAINTENANCE (CONTINUED)

(1) SMR CODE	(2) FEDERAL STOCK NUMBER	(3) DESCRIPTION Reference Number & Alt Code	(4) UNIT OF ISSUE	(5) QTY INC IN UNIT	(6) 5-DAY ORGANIZATIONAL MAINTENANCE ALLOW				(7) ILLUSTRATIONS	
					(a) 1-5	(b) 6-20	(c) 21-50	(d) 51-100	(a) FIG NO	(b) ITEM NO OF REFERENCE DESIGNATION
P O R757	5920284493	FUSE, CARTRIDGE SAME AS R727	EA	REF						-352A14F31 3-22
P O R758	5920284493	FUSE, CARTRIDGE SAME AS R727	EA	REF						-352A14F32 3-22
P O Q965	5920284465	FUSE, CARTRIDGE F024250V1AS, 01349	EA	2	2	2	3	6		-352A14F1 11-1
P O Q966	5920284465	FUSE, CARTRIDGE SAME AS Q965	EA	REF						-352A14F2 11-1
P O Q993	5355685468	KNOB, CONTROL, PLASTIC SAME AS Q992	EA	2						-352A14PP5 11-1
P O Q994	5355685468	KNOB, CONTROL, PLASTIC SAME AS Q992	EA	REF						-352A14PP10 11-1
P O Q995	62401557967	LAMP, INCANDESCENT 0813, 0806	EA	1	*	*	2	2		-352A14RT1 11-3
P O Q996	62401557836	LAMP, INCANDESCENT SAME AS F481	EA	1						-352A14DS1 11-1
P O Q997	62407978600	LAMP, INCANDESCENT MS15579-1, 96906	EA	1	*	*	2	2		-352A14DS2 11-1
P O R003	62109879637	LENS 19-533, 72619	EA	1	*	*	*	*		-352A14MP11 11-3
A O R R094		RACK, EQUIPMENT ASSEMBLY-AS 515-6027-002, 13499	EA	1						2A5
A O R R122	58209350111	AMPLIFIER-CONVERTER, AM-4916 772-5096-001, 13499	EA	1						2A5A1
P O R269	53555560151	KNOB, CONTROL, STYLE D MS91528-1D28, 96906	EA	1	*	*	*	*		-352A5A1A1A5MP1 6-2
P O R272		KNOB, CONTROL 282-0137-00, 93108	EA	1	*	*	*	*		-352A5A1A1A5MP2 6-2
P O R471	53556167669	KNOB, CONTROL, PLASTIC MS91528-2D28, 96906	EA	1	*	*	*	*		-352A5A1MP4 6-21
P O R R473		MIXER ASSEMBLY SMD437656, 80063	EA	1	*	*	*	*		-352A5A1A2 6-7
P O R R493	58959974698	OSCILLATOR ASSEMBLY, TUNE-UP 769-5262-001, 13499	EA	1	*	2	3	5		-352A5A1A5 6-2
P O R671	53557687406	KNOB 515-6057-001, 13499	EA	1	*	*	*	*		-352A5A1A10MP13 6-17
A O R S016	58200893115	SYNTHESIZER, ELECTRICAL FREQ 758-5738-001, 13499	EA	3						2A5A2
A O R S291		PANEL, POWER CONTROL 774-5891-001, 13499	EA	1						2A5A2A1A2
P O S293	59202804465	FUSE, CARTRIDGE SAME AS Q965	EA	1						-352A5A1A1A2F1 9-16

SECTION IV

REPAIR PARTS FOR ORGANIZATIONAL MAINTENANCE (CONTINUED)

(1) SMM CODE	(2) FEDERAL STOCK NUM. JR.	(3) DESCRIPTION Reference Number & Av Code	(4) USABLE ON CODE	(5) UNIT OF ISSUE	(6) QTY INC IN UNIT	(7) 30-DAY ORGANIZATIONAL MAINTENANCE ALW.				(8) ILLUSTRATIONS	
						(a) 1-5	(b) 6-20	(c) 21-50	(d) 51-100	(a) FIG. NO.	(b) ITEM NO. OR REFERENCE DESIGNATION
P O R 70200002100 7044		MODULE, PANEL-FACIL 75-7000-001, 13499		EA	1	•	2	3	5	-352A5A2A14	9-26
P O R 62407637744 70478		LAMP, INCANDESCENT MS 18209-387, 94906		EA	2	•	•	•	•	-352A5A2A14D51	9-55
P O R 62407637744 70479		LAMP, INCANDESCENT SAME AS 7478		EA	REF					-352A5A2A14D52	9-55
P O R 53557675030 70425		KNOB 75-0232-001, 13499		EA	1	•	•	•	•	-352A5A2A17MP7	9-17
P O R 70427		KNOB 75-0232-003, 13499		EA	1	•	•	•	•	-352A5A2A17MP8	9-17
P O R U0993		TUBE 770-2452-C01, 13499		EA	3	•	•	•	2	-352A5A2A17A2MP25	9-20
P O R U0994		TUBE SAME AS U0993		EA	REF					-352A5A2A17A2MP26	9-20
P O R U0995		TUBE SAME AS U0993		EA	REF					-352A5A2A17A2MP27	9-20
A O R U102	59200893115	SYNTHESIZER, ELECTRICAL FREQ SAME AS SC16		EA	REF					2A5A3	
P O R U177	59202960529	FUSE, CARTRIDGE ABCI, 71400		EA	1	•	•	•	•	-352A5A2F8	7-3
P O R U179	62109888742	LAMP, INDICATOR SAME AS E653		EA	2					-352A5A2D51	7-3
P O R U180	62109888742	LAMP, INDICATOR SAME AS E653		EA	REF					-352A5A2D52	7-3
P O R U199		POWER SUPPLY 227-2472, 13850		EA	1	•	•	•	•	-352A5A2P51	7-2
A O R U255		RACK 6 515-6028-C02, 13499		EA	1					2A6	
A O R U309	58209350111	AMPLIFIER-CONVERTER AM-4916 SAME AS R122		EA	1					2A6A1	
A O R U310	58209797200	AMPLIFIER ASSEMBLY, AM-4557 AM4557TRC, 80058		EA	1					2A6A2	
P O R U311	58207683977	MONITOR, 76A1-TH 522-5737-003, 13499		EA	1	•	2	3	5	-122A6A2A13	1-10
A O R U313		PANEL ASSEMBLY, WIRED 515-7399-003, 13499		EA	1					2A6A2A13A1	
A O R U315		BOARD, FLARED 515-7399-002, 13499		EA	1					2A6A2A13A1A1	
P O R U329	53557675030	KNOB SAME AS T825		EA	3					-352A6A2A13A1MP2	8-17
P O R U330	53557675030	KNOB SAME AS T825		EA	REF					-352A6A2A13A1MP3	8-17

SECTION IV

REPAIR PARTS FOR ORGANIZATIONAL MAINTENANCE (CONTINUED)

(1) SAR CODE	(2) FEDERAL STOCK NUMBER	(3) DESCRIPTION Reference Number & A/R Code	(4) UNIT OF ISSUE USABLE ON CODE	(5) QTY INC IN UNIT	(6) 15-DAY ORGANIZATIONAL MAINTENANCE ALLOW.				(7) ILLUSTRATIONS	
					(a) 1-5	(b) 6-20	(c) 21-30	(d) 31-100	(a) FIG NO	(b) ITEM NO OR REFERENCE DESIGNATION
P O U331	53557675030	KNOB SAME AS F425	EA	REF					-122A6A2A13A1P4 8-17	
P O U332	53557675008	KNOB 75-0233-001,13499	EA	1	*	*	*	*	-122A6A2A13A1MP5 8-17	
P O R U429	58207949913	REGULATOR, 12A1-TH 522-5736-004,13499	EA	2	4	2	3	5	-122A6A2A14 1-10	
A O R U430		BOARD, PRINTED CIRCUIT, WIRED 515-4997-003,13499	EA	1					2A6A2A14A1	
P O U461	62401557836	LAMP, INCANDESCENT SAME AS F481	EA	1					-122A6A2A14A1DS1 3-6	
P O R U512	58207949913	REGULATOR, 12A1-TH SAME AS U429	EA	REF					-122A6A2A15 1-10	
P O R U513	58207885908	CONVERTER, 59A1-TH 522-5724-005,13499	EA	2	2	3	7	13	-122A6A2A8 1-10	
P O R U725	58207977221	AMPLIFIER SUBASSEMBLY, LIMITER 515-7447-001,13499	EA	1	2	4	10	18	2A6A2A1A1	
A O R U754		BOARD, WIRED LIMITER AMPLIFIER 515-7443-003,13499	EA	1					2A6A2A1A1A1A2	
P O R U973		DISCRIMINATOR SUBASSEMBLY, A2 515-7444-001,13499	EA	1	2	3	7	13	-122A6A2A1A2 1-10	
P O R V136	58207977192	COMBINER, 20A1-TH 522-5666-003,13499	EA	2	4	4	2	2	-122A6A2A6 1-10	
P O R V274	58207885906	AMPLIFIER, BASE BAND, 24A1-TH 522-5734-003,13499	EA	2	2	2	3	6	-122A6A2A3 1-10	
A O R V358	58959372723	COUPLER, BASE BAND, 4CA1-TH 522-5733-003,13499	EA	1					2A6A2A10	
P O R V400	58207885906	AMPLIFIER, BASE BAND, 24A1-TH SAME AS V274	EA	REF					-122A6A2A4 1-10	
P O R V401	58207977192	COMBINER, 20A1-TH SAME AS V136	EA	REF					-122A6A2A7 1-10	
P O R V403	58207885908	CONVERTER, 59A1-TH SAME AS U513	EA	REF					-122A6A2A9 1-10	
A O R V683	58207702254	RECEIVER, 515-1, SHOCK MOUNTED 758-0874-001,13499	EA	1					2A6A3	
A O R V684		PANEL, SPEAKER 758-0664-001,13499	EA	1					2A6A4	
P O V719	53556801357	KNOB, CONTROL, PLASTIC SAME AS G300	EA	1					-122A6A4MP1 3-37	
P O V720	62401557836	LAMP, INCANDESCENT SAME AS F411	EA	6					-122A6A4DS1 3-77	
P O V721	62401557836	LAMP, INCANDESCENT SAME AS F481	EA	REF					-122A6A4DS2 3-37	

SECTION IV

REPAIR PARTS FOR ORGANIZATIONAL MAINTENANCE (CONTINUED)

(1) SNR CODE	(2) FEDERAL SPECIA NUMBER	(3) DESCRIPTION Reference Number & Air Code	(4) USABLE ON CODE	(5) UNIT OF ISSUE	(6) QTY INC IN UNIT	(7) 15-DAY ORGANIZATIONAL MAINTENANCE ALLOW				(8) ILLUSTRATIONS	
						(a) 1-5	(b) 6-20	(c) 21-50	(d) 51-100	(a) FIG NO.	(b) ITEM NO. OR REFERENCE DESIGNATION
P O W722	62401557836	LAMP, INCANDESCENT SAME AS F481		EA	REF						-122A844058 1-11
P O W723	62401557836	LAMP, INCANDESCENT SAME AS F481		EA	REF						-122A844058 1-11
P O W724	62401557836	LAMP, INCANDESCENT SAME AS F481		EA	REF						-122A844058 1-11
P O W725	62401557836	LAMP, INCANDESCENT SAME AS F481		EA	REF						-122A844058 1-11
P O W726	62107775507	LIGHT, INDICATOR 183-9730-1471, 72619		EA	6			2	2		-122A844058 1-11
P O W727	62107775507	LIGHT, INDICATOR SAME AS W726		EA	REF						-122A844058 1-11
P O W728	62107775507	LIGHT, INDICATOR SAME AS W726		EA	REF						-122A844058 1-11
P O W729	62107775507	LIGHT, INDICATOR SAME AS W726		EA	REF						-122A844058 1-11
P O W730	62107775507	LIGHT, INDICATOR SAME AS W726		EA	REF						-122A844058 1-11
P O W731	62107775507	LIGHT, INDICATOR SAME AS W726		EA	REF						-122A844058 1-11
A O R W748		RACK ASSEMBLY, EQUIPMENT 515-6029-003, 13499		EA	1						2A7
A O R W875	66257679452	AMPLIFIER-MODULATOR MD-683/TRC MD683TRC, R0058		EA	1						2A721
P O R W876	58209123248	MONITOR ASSEMBLY 522-5738-003, 13497		EA	1			2	2	3	-122A7A1A7 1-11
P O R W889	53557675008	KNOB, SKIRTED SAME AS U332		EA	1						-352A7A1A7A1PP1 3-13
P O R W958	58207949913	REGULATOR ASSEMBLY SAME AS U429		EA	1						-122A7A1A5 1-11
P O R W959	58057687437	EMPHASIS ASSEMBLY 522-5888-003, 13499		EA	1			2	2		-122A7A1A5 1-11
A O R W005	58207731111	OSCILLATOR ASSEMBLY 522-5739-004, 13499		EA	1						2A7A1A8
P O R W006		AMPLIFIER SUBASSEMBLY 515-7349-001, 13499		EA	1	2	2	3	6		-122A7A1A8A1 1-11
P O R W152		OSCILLATOR SUBASSEMBLY 515-7350-001, 13499		EA	1						-122A7A1A8A3 1-11
A O R W294	58209123249	CONTROL, AUTOMATIC FREQUENCY 522-5735-004, 13499		EA	1						2A7A1A3
P O R W295		SWITCH AND DISCRIMINATOR 515-7406-000, 13499		EA	1	2	2	4	7		-122A7A1A3A1 1-11

SECTION IV

REPAIR PARTS FOR ORGANIZATIONAL MAINTENANCE (CONTINUED)

(1) SAR CODE INDEX NO.	(2) FEDERAL STOCK NUMBER	(3) DESCRIPTION Reference Number & Aff Code	(4) USABLE ON CODE	(5) QTY INC IN UNIT	(6) 15-DAY ORGANIZATIONAL MAINTENANCE ALLOW				(7) OPERATIONS	
					(a) 1-5	(b) 6-20	(c) 21-50	(d) 51-100	(a) FIG NO.	(b) ITEM NO OR REFERENCE DESIGNATION
P O R X600	58207674277	AMPLIFIER, OUTPUT, TO MEGACYCLE 522-5740-005, 13499	EA	1	4	2	3	5	-12	2A7A1A1 1-11
A O R X924	58207679449	MONITOR, AF-RF, MA-7285/TRC MA 7285TRC, 8005B	EA	1						2A7A2
P O X160	59601886584	ELECTRON TUBE 5670, 81349	EA	6	2	3	9	16	-12	2A7A2V1 8-2
P O X161	59601886584	ELECTRON TUBE SAME AS X160	EA	REF					-12	2A7A2V2 8-2
P O X162	59601886584	ELECTRON TUBE SAME AS X160	EA	REF					-12	2A7A2V3 8-2
P O X163	59601886584	ELECTRON TUBE SAME AS X160	EA	REF					-12	2A7A2V4 8-2
P O X164	59601886584	ELECTRON TUBE SAME AS X160	EA	REF					-12	2A7A2V5 8-2
P O X165	59601886584	ELECTRON TUBE SAME AS X160	EA	REF					-12	2A7A2V6 8-2
P O X166		ELECTRON TUBE SAME AS P126	EA	REF					-12	2A7A2V8 8-2
P O X167		ELECTRON TUBE SAME AS P126	EA	REF					-12	2A7A2V5 8-2
P O X168		ELECTRON TUBE 1284, 82219	EA	1	0	0	0	0	-12	2A7A2V7 8-2
P O X211	59208506091	FUSE, CARTRIDGE F02B250V1A5, 81349	EA	1	0	0	0	0	-35 12-2	2A7A2F1
A O R X255		PANEL ASSEMBLY, FRONT 515-6052-001, 13499	EA	1						2A7A2A7
P O X278	53555104592	KNOB, BAR C64969-1G, 82090	EA	2	0	0	0	0	-12 3-39	2A7A2A7MP1
P O X279	53555104592	KNOB, BAR SAME AS X278	EA	REF					-12 3-39	2A7A2A7MP2
P O X280	62109888742	LAMP, INDICATOR SAME AS E653	EA	1					-12 3-39	2A7A2A7DS1
P O X282	62109888742	LIGHT, INDICATOR SAME AS E653	EA	1					-12 3-39	2A7A2A7DS2
A O R X674		CHASSIS ASSEMBLY 769-5257-001, 13499	EA	1						2A7A3A1
P O X929	59602621357	ELECTRON TUBE 5654-6AK5H, 81349	EA	1	0	2	2	3	-35 4-3	2A7A3A1V2
P O X930	59605781652	ELECTRON TUBE 6384, 81349	EA	1	0	2	2	3	-35 4-3	2A7A3A1V1
P O X933	59202804485	FUSE, CARTRIDGE SAME AS Q965	EA	2					-35 4-3	2A7A3A1F3

SECTION IV

REPAIR PARTS FOR ORGANIZATIONAL MAINTENANCE (CONTINUED)

(1) SMP CODE	(2) FEDERAL STOCK NUMBER	(3) DESCRIPTION reference Number & Air Code	(4) UNIT OF ISSUE	(5) QTY REQ IN UNIT	(6) 15-DAY ORGANIZATIONAL MAINTENANCE AL#				(7) ILLUSTRATIONS	
					(a) 1-5	(b) 6-20	(c) 21-50	(d) 51-100	(a) FIG. NO.	(b) ITEM NO. OR REFERENCE DESIGNATION
P C V554	59202804445	FUSE, CARTRIDGE SAME AS 0965	EA	1					-35 10-1	2A7A5F1
P C V555	59202809320	FUSE, CARTRIDGE F028250V1-2AS,81349	EA	1	*	*	*	*	-35 10-1	2A7A5F2
P C V592	62109888742	LIGHT, INDICATOR SAME AS E664	EA	3					-35 10-1	2A7A5D51A
P C V593	62109888742	LIGHT, INDICATOR SAME AS E664	EA	REF					-35 10-1	2A7A5D52A
P C V594	62109888742	LIGHT, INDICATOR SAME AS E664	EA	REF					-35 10-1	2A7A5D53A
P C V595	62109888742	LIGHT, INDICATOR SAME AS E653	EA	3					-35 10-1	2A7A5D51
P C V596	62109888742	LIGHT, INDICATOR SAW AS E653	EA	REF					-35 10-1	2A7A5D52
P C V597	62109888742	LIGHT, INDICATOR SAME AS E653	EA	REF					-35 10-1	2A7A5D53
P C Z030	59208554260	FUSE, CARTRIDGE F028125V2AS,81349	EA	1	*	*	*	*	-35 13-7	2A7A6F1
A C R Z087		RACK, EQUIPMENT ASSEMBLY 515-6030-002,13499	EA	1						2A8
A C R Z131		AMPLIFIER, POWER, 50V1 AH4559TRC,80058	EA	1						2ABA1
A C R Z132		PANEL ASSEMBLY, CONTROL 515-6310-001,13499	EA	1						2ABA1A1
P C R Z222	58207674807	CARD ASSEMBLY, LOW POWER ALARM 515-6012-011,13499	EA	1	*	2	3	5	-35 5-5	2ABA1A1A2
P C R Z318	58207674808	CARD ASSEMBLY, H USWR/BEAM 515-6012-012,13499	EA	1	*	*	*	*	-35 5-5	2ABA1A1A3
P C R Z320	58207674787	CARD ASSEMBLY, H. USWR/BEAM 515-6012-013,13499	EA	1	*	*	*	*	-35 5-5	2ABA1A1A4
A C R Z352	58209991471	MODULE ASSEMBLY, CONTROL PANEL 515-6526-01,13499	EA	1						2ABA1A1A7
P C Z434	62401557836	LAMP, INCANDESCENT SAME AS F481	EA	7					-35 5-7	2ABA1A1A7D58
P C Z435	62401557836	LAMP, INCANDESCENT SAME AS F481	EA	REF					-35 5-7	2ABA1A1A7D59
P C Z436	62401557836	LAMP, INCANDESCENT SAME AS F481	EA	REF					-35 5-7	2ABA1A1A7D51C
P C Z437	62401557836	LAMP, INCANDESCENT SAME AS F481	EA	REF					-35 5-7	2ABA1A1A7D511
P C Z438	62401557036	LAMP, INCANDESCENT SAME AS F481	EA	REF					-35 5-7	2ABA1A1A7D512

SECTION IV

REPAIR PARTS FOR ORGANIZATIONAL MAINTENANCE (CONTINUED)

(1) SAR CODE	(2) FEDERAL STOCK NUMBER	(3) DESCRIPTION Reference Number & Mfr Code	(4) UNIT OF ISSUE	(5) QTY INC IN UNIT	(6) 15-DAY ORGANIZATIONAL MAINTENANCE ALW.				(7) ILLUSTRATIONS	
					(a) 1-5	(b) 6-20	(c) 21-50	(d) 51-100	(a) FIG. NO.	(b) ITEM NO. OR REFERENCE DESIGNATION
P 0 2439	62401557836	LAMP, INCANDESCENT SAME AS F481	EA	REF					-35 5-7	ZABAI1A7CS13
P 0 2440	62401557836	LAMP, INCANDESCENT SAME AS F481	EA	RFF					-35 5-7	ZABAI1A7CS14
P 0 2441		LAMP ASSEMBLY SAME AS V726	EA	3					-35 5-7	ZABAI1A7CS5
P 0 2442		LAMP ASSEMBLY SAME AS V726	EA	REF					-35 5-7	ZABAI1A7CS6
P 0 2443		LAMP ASSEMBLY SAME AS V726	EA	REF					-35 5-7	ZABAI1A7CS7
P 0 2876	59607737883	KLYSTRON VAB888,99313	EA	1	•	•	•	•	-35 5-20	ZABAI1A2A3A5
P 0 AH19	93259218206	KNOR 231-1154G2,49956	EA	1	•	•	•	•	-35 5-20	ZABAI1A37015

SECTION V

INDEX FEDERAL STOCK NUMBER CROSS REFERENCE TO INDEX NUMBER

FEDERAL STOCK NUMBER	INDEX NO.	FEDERAL STOCK NUMBER	INDEX NO.	FEDERAL STOCK NUMBER	INDEX NO.	FEDERAL STOCK NUMBER	INDEX NO.
30305283828	P372	53557281323	K479	53559073460	M 265	58957661649	K100
30305283828	P374	53557281323	K606	53559073460	M 267	58957661649	M816
30305283828	P375	53557281323	K608	53559073460	M 269	58957661652	J845
30305283828	P378	53557281323	K610K	53559073460	M 271	58957661652	M815
30305283828	P380	53557281323	K612K	53559336838	M 102	58957661653	M673
30305283828	P382	53557281323	K614	58050539065	G1153	589576746266	G675
5.259218206	304	53557281323	K1616	58050539065	M 669	58957674638	f '5
53555104592	4-119	53557281323	K618	56051413931	O150	58957674638	H806
53555104592	X278	53557281323	K620	58052759119	F256	58957687431	J
53555104592	X279	53557281323	K622	58052759119	G096	58957687431	H810
5355560145	X976	53557281323	K624	58052759119	G097	58957687432	JO82
5355560145	E652	53557281323	K626	58052759119	G739	58957687432	H813
5355560151	3269	53557281323	K628	58052759119	G740	58957687433	1572
53556167669	R471	53557261323	M721	58052759119	G977	58957687433	H811
53556801357	5300	53557281323	H723	58052759119	G978	58957687434	1827
53556801357	6301	53557281323	H723	58052759119	H657	58957687434	H812
53556801357	a(344	53557281323	M725	58052759119	H658	58957687435	J335
53556801357	N345	53557261323	M727	58052759119	M671	58957687435	H714
53556801357	V719	53557281323	M729	58052759119	M672	58957687436	1317
53556854688	0992	53557281323	M731	58052759816	F376	58957687436	H809
53556854688	0993	53557281323	M733	58057687437	V959	58957885596	N945
53556854688	0994	53557281323	M735	58359372729	G098	58957929486	N336
5355728132	5765	53557281323	M737	58150512826	F-377	58957929745	N520
5355728132	E768	53551281323	a739	58150512826	G976	58957929745	N535
5355728132	E770	53557281323	M741	58150512826	M670	58957929751	G442
5355728132	F772	53557281323	M743	58150512827	F860	58957929751	3
5355728132	F774	53557281323	N157	58150512827	G741	58957929758	G311
5355728132	E776	53557281323	N158	58150512827	M659	58957929770	PO53
5355728132	E778	53557281323	N159	58200893115	S016	58957950013	G292
5355728132	E780	53557281323	N160	58200893115	U102	58957964823	K469
5355728132	F782	53557281323	N161	58200893115	Y327	58957964823	KS77
5355728132	E784	53557281323	N162	58201413924	G742	58957964823	K578
5355728132	FO68	53557281323	N163	5820141392	E972	58957964823	K579
5355728132	FO70	53557281323	N164	5820141392	N243	58957964823	K580
5355728132	FO72	53557281323	N165	5820141392	F729	58957964823	K581
5355728132	FO74	53557281323	N166	5820141392	F608	58957964823	K582
5355728132	FO76	53557281323	N262	58201413933	0750	589558957964823	K583
5355728132	FO78	53557291323	N263	58201413933	0808	58957964823	K584
5355728132	FO80	53557281323	N264	58201413936	0390	58957964823	K585
5355728132	FO82	53557281323	N265	58201413937	0423	58957964823	K586
5355728132	FO84	53557281323	N266	58201413938	0431	58957964823	K587
5355728132	FO86	53557281323	N267	58201413939	0439	58957964823	N818
5355728132	FO88	53557281323	N268	58201413940	0455	58957964823	M819
5355728132	FO90	53557281323	N269	58201413941	0563	58957964823	M820
5355728132	5207	53557281323	N270	58201413942	0603	58957964823	M821
5355728132	5209	53557281323	N271	58201413943	N750	58957964823	M822
5355728132	5211	53557281323	N272	58201413945	N962	58957964823	M823
5355728132	G213	53557281323	N273	58201413945	0020	58957964823	M824
5355728132	5215	53557281323	N554	58201681564	A001	58957964823	M825
5355728132	G217	53557281323	N555	58201974468	0659	58957964823	M826
5355728132	G219	53557281323	N556	58201974468	0862	58957964823	M827
5355728132	G221	53557281323	N557	58201974476	M660	58957964823	M828
5355728132	G223	53557281323	N558	58201974479	N388	58957964823	M829
5355728132	G225	53557281323	N559	58201974479	N519	58959372721	0267
5355728132	G227	53557281323	N560	58202578418	0447	58959372721	2463
5355728132	G569	53557281323	N561	58207674787	2320	58959372722	N913
5355728132	G571	53557281323	N562	58207674807	Z222	58959372722	N944
5355728132	G573	53557281323	N563	58207674808	2318	58959372723	V358
5355728132	G575	53557281323	N564	58207674877	W600	58959372725	K688
5355728132	G577	53557281323	0048	58207679449	W924	58959372725	K918
5355728132	G579	53557281323	0049	58207683977	U311	58959372725	K919
5355728132	G581	53557281323	0050	58207702254	V683	58959372725	K920
5355728132	G583	53557281323	0051	58207731111	W005	58959372725	K921
5355728132	G585	53557281323	0052	58207885906	V274	58959372725	K922
5355728132	G587	53557281323	0053	58207885906	V400	58959372725	K923
5355728132	G589	53557281323	0054	58207885908	U513	58959372725	K924
5355728132	G591	53557281323	0055	58207885908	V403	58959372725	K925
5355728132	H100	53557281323	0056	58207949913	U429	58959372725	K926
5355728132	H102	53557281323	0483	58207949913	U512	58959372725	K927
5355728132	G104	53557281323	0485	58207949913	V958	58959372725	K928
5355728132	H106	53557281323	0487	58207964708	M652	58959974698	R493
5355728132	H108	53557281323	0489	58207977192	V136	59151983283	N359
5355728132	H110	53557281323	0491	58207977192	V401	59201215509	E925
5355728132	H112	53557281323	0493	58207977200	U310	59201215509	E927
5355728132	H114	53557281323	0495	58207977221	U725	59201319816	E888
5355728132	H116	53557281323	0497	58208061319	Y328	59201319816	E894
5355728132	H118	53557281323	0499	58208613539	E136	59201424837	M492
5355728132	H120	53557281323	0501	58209123248	B786	59201424837	M495
5355728132	H122	53557281323	0503	58209123249	W294	59201999498	E887
5355728132	K397	53557281323	0505	58209158674	F151	59231999498	E892
5355728132	K399	53557603240	M106	58209350111	R122	59202254996	E895
5355728132	K401	53557603240	M506	58209350111	U309	59202254996	N242
5355728132	K403	53557650008	U332	58209952330	T442	59202287882	E862
5355728132	K405	53557675008	V889	58209991471	Z352	59202287882	E941
5355728132	K407	53557675030	T825	58957661382	H177	59202287882	E942
5355728132	K409	53557675030	U329	58957661382	M805	59202287882	E943
5355728132	K411	53557675030	U330	58957661641	H543	59202287882	E944
5355728132	K413	53557675030	U331	58957661641	M806	59202287882	E945
5355728132	K415	53557687406	R671	58957661648	H798	59202804465	0965
53557201323	K417	5358099329	M104	58957661648	MB07	59202804465	0966

SECTION V

INDEX FEDERAL STOCK NUMBER CROSS REFERENCE TO INDEX NUMBER (CONTINUED)

FEDERAL STOCK NUMBER	INDEX NO.	FEDERAL STOCK NUMBER	INDEX NO.	FEDERAL STOCK NUMBER	INDEX NO.	FEDERAL STOCK NUMBER	INDEX NO.
59202804465	E294	61109857956	E889				
59202804465	X933	61109857956	E890				
59202804465	4934	61109857956	E891				
59202804465	Y554	61109857956	E893				
59202805031	E643	61109857956	N234				
59202805031	F644	61109857956	N235				
59202805031	F645	61109857956	N236				
59202805031	E646	61109857956	N237				
59202805062	P138	61109857956	N238				
59202808142	L910	61109857956	N239				
59202809320	Y555	61109857956	N240				
59202849493	P727	61109857956	N241				
59202849493	P728	6210777507	V726				
59202849493	P729	62107775507	V727				
59202849493	P730	62107775507	V728				
59202849493	P731	62107775507	V729				
59202849493	P732	62107775507	V730				
59202849493	P733	62107775507	V731				
59202849493	P734	6210988742	R003				
59202849493	P735	62109888742	E653				
59202849493	P736	62109888742	E654				
59202849493	P737	62109888742	E655				
59202849493	P738	62109888742	E656				
59202849493	P739	62109888742	E664				
59202849493	P740	62109888742	U179				
59202849493	P741	62109888742	U180				
59202849493	P742	62109888742	X280				
59202849493	P743	62109888742	X282				
5920284949	P744	6262109888742	X977				
59202849493	P745	62109888742	X978				
59202849493	P746	62109888742	X979				
59202849493	P747	62109888742	Y592				
59202849493	P748	62109888742	Y593				
59202849493	P749	62109888742	Y594				
59202849493	P750	62109888742	Y595				
59202849493	P751	62109888742	Y596				
59202849493	P752	62109888742	Y597				
59202849493	P753	62109941165	M498				
59202849493	P754	62401557836	F481				
59202849493	P755	62401557836	N667				
59202849493	P756	62401557836	0996				
59202849493	P757	62401557836	U1b1				
59202849493	P758	62401557836	V720				
59202849493	U177	62401557836	V721				
5920296151	E445	62401557836	V722				
59205569947	L871	62401557836	V723				
59206820330	E926	62401557836	V724				
59206820330	E928	62403557836	V725				
59207356457	E946	62401557836	2434				
59207356457	.947	62401557836	I435				
59208506091	.211	62401557836	U461				
59208554260	zu '0	62401557836	2437				
59208779934	X935	62401557836	438				
59208779934	X936	62401557836	439				
59350572360	G160	62401557836	i:40				
59350572362	H035	62401557836	0995				
59350572362	M689	62407637744	T479				
59350587112	G645	62407637744	T479				
59350587112	M651	6240797860	0997				
59601007301	P389	62408514352	E453				
59601886584	X16C	62408514352	F454				
59601886584	X161	62409651497	L:85				
59601886584	X162	62409651497	F:86				
59601886584	X163	66257274695	MS65				
59601886584	X164	66257679452	V875				
59601886584	X165	66259372459	F193				
59601886584	Y531	66259651532	L979				
59601886584	Y532						
59601886584	Y533						
59601886584	Y534						
59601886584	Y535						
59601886584	Y536						
59601886584	Y537						
59601886584	Y538						
59601886584	Y539						
59602541740	P132						
59602541740	P133						
59602541740	P134						
59602621357	X929						
59602621357	Y526						
59605093171	P135						
59605561308	P131						
59605781652	X930						
59607737883	Z876						
59608466619	P127						
59608466619	P128						
59608466619	P129						
61109857956	E840						
61109857956	E885						
61109857956	E886						

By Order of the Secretary of the Army:

W. C. WESTMORELAND,
General, United States Army,
Chief of Staff.

Official:

VERNE L. BOWERS
Major General, United States Army,
The Adjutant General.

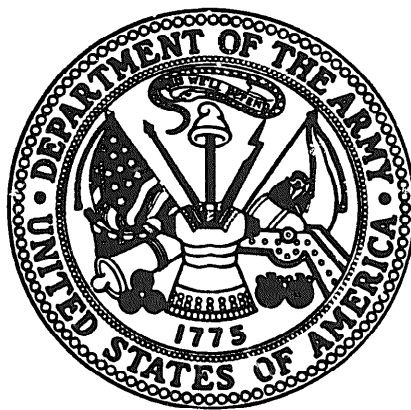
Distribution:

To be distributed in accordance with DA Form 12-51 (qty rqr Block #482), Organizational maintenance requirements for AN/TRC-129 radio terminal set.

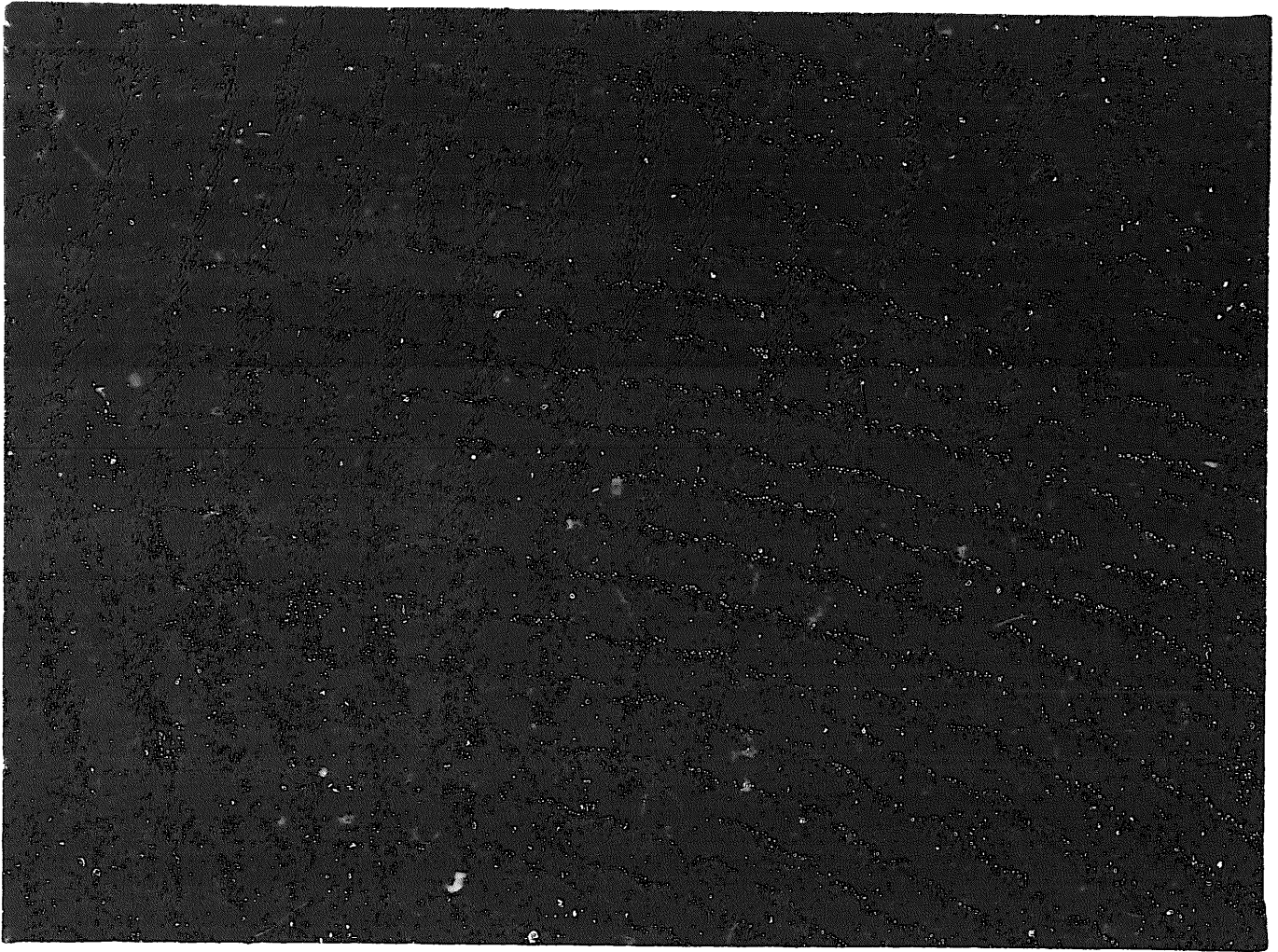
END

11-26-82

DATE

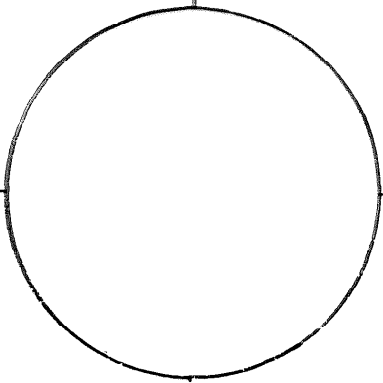
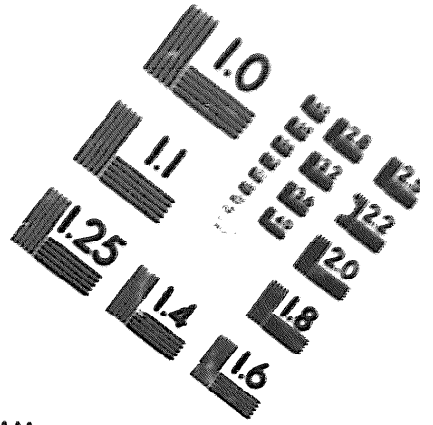
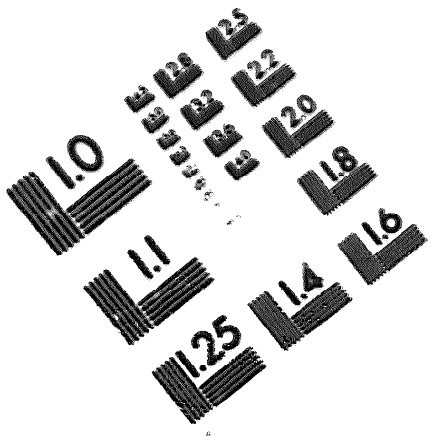


TM 11-5820-726-20P RADIO TERMINAL SET AN/TRC-129A-1972



DEPARTMENT OF THE ARMY

MICROFORM
TEST TARGET



150 MM

1.0 mm (e= 81 mic)

ABCDEFGHIJKLMN OPQRSTUVWXYZ 1234567890
abcdefghijklmnopqrstuvwxyz \$%&' /%# 1/2 3/4 —+ x&@*

1.5 mm (e= 1.09 mm)

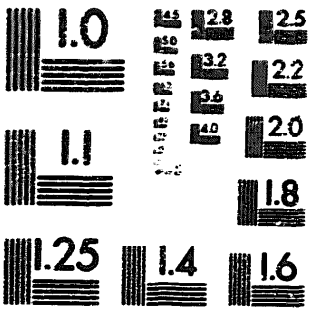
ABCDEFGHIJKLMN OPQRSTUVWXYZ 1234567890
abcdefghijklmnopqrstuvwxyz \$%&' /%# 1/2 3/4 —+ x&@*

2.0 mm (e= 1.37 mm)

ABCDEFGHIJKLMN OPQRSTUVWXYZ
abcdefghijklmnopqrstuvwxyz
1234567890 \$%&' /%# 1/2 3/4 —+ x&@*

2.5 mm (e= 1.77 mm)

ABCDEFGHIJKLMN OPQRSTUVWXYZ
abcdefghijklmnopqrstuvwxyz
1234567890 \$%&' /%# 1/2 3/4 —+ x&@*



1.0 mm (e= 81 mic)

ABCDEFGHIJKLMN OPQRSTUVWXYZ 1234567890
abcdefghijklmnopqrstuvwxyz \$%&' /%# 1/2 3/4 —+ x&@*

1.5 mm (e= 1.09 mm)

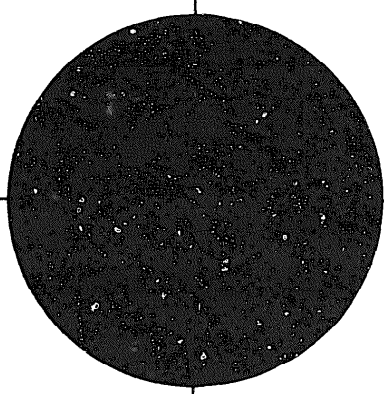
ABCDEFGHIJKLMN OPQRSTUVWXYZ 1234567890
abcdefghijklmnopqrstuvwxyz \$%&' /%# 1/2 3/4 —+ x&@*

2.0 mm (e= 1.37 mm)

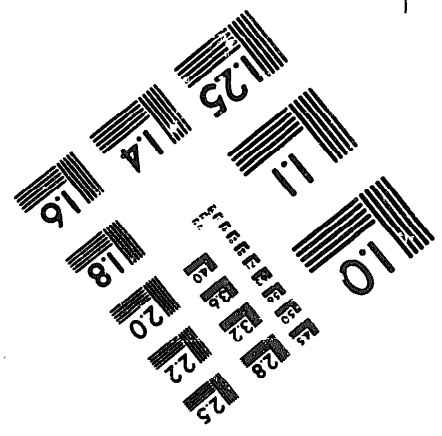
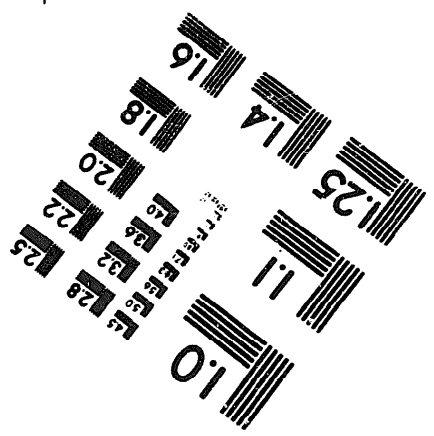
ABCDEFGHIJKLMN OPQRSTUVWXYZ
abcdefghijklmnopqrstuvwxyz
1234567890 \$%&' /%# 1/2 3/4 —+ x&@*

2.5 mm (e= 1.77 mm)

ABCDEFGHIJKLMN OPQRSTUVWXYZ
abcdefghijklmnopqrstuvwxyz
1234567890 \$%&' /%# 1/2 3/4 —+ x&@*



200 MM



250 MM